
2.4 GHz Band Wireless unit

Setting Utility (SWL31-UT1)

User's Manual

Thank you for purchasing our 2.4 GHz Band Wireless unit (hereinafter called "Wireless unit").
To use the Wireless unit correctly and safely, please read this manual carefully before using it to understand sufficiently its functions and performance.

Cautions

1. Do not copy this user's manual without permission.
2. Please note that descriptions in this manual are subject to change without notice.

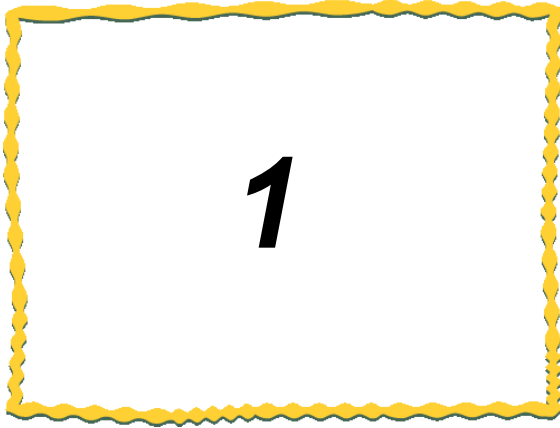
◆ USAGE PRECAUTIONS

- Observe the following while parameters are being written to the Wireless unit. If not, breakdowns may occur.
 - Do not turn off the power of the Wireless unit.
 - Do not interrupt the communication between PC and the Wireless unit by pulling out of USB cable.
- It is recommended that you decide on a port on your PC to connect the Wireless unit if the PC has multiple USB ports. If you change the USB port to connect the Wireless unit, re-installation of the driver will be required.
- Do not connect multiple Wireless units to PC.

◆ Table of Contents

USAGE PRECAUTIONS	A-1
SOFTWARE VERSION CORRESPONDANCE TABLE	A-1

1. OVERVIEW.....	1-1
1.1. Overview	1-2
1.2. Disclaimer	1-2
1.3. Operating Environment.....	1-2
1.4. Target Model	1-2
2. UTILITY PREPARATION.....	2-1
2.1. Procedure.....	2-2
2.2. Checking File Configuration.....	2-3
2.3. Connecting a PC to the Wireless unit	2-3
2.4. Installing the Driver.....	2-4
2.5. Starting/Exiting the Utility	2-11
2.6. Installing .Net Framework.....	2-11
2.7. Connection COM Port Checking Procedure	2-12
3. HOW TO USE.....	3-1
3.1. Procedure of Utility use	3-2
3.1.1. When the Unit is Newly Installed	3-2
3.1.2. When the Master Station [SWL31-ETMC] is Replaced	3-3
3.1.3. When the Slave Station [SWL31-R4ML] is Replaced	3-4
3.1.4. For Wireless unit Setting Data Backup.....	3-5
3.2. Preparing Setting Data with Utility.....	3-6
3.3. Checking Communication with the Wireless unit	3-7
3.4. Writing the Setting Data to the Wireless unit.....	3-8
3.5. Saving the Setting Data File	3-10
3.6. Reading the Saved Setting Data File	3-11
3.7. Reading the Setting Data from the Wireless unit	3-12
3.8. Initializing Parameters	3-13
4. SCREEN DETAIL	4-1
4.1. Main Screen (Common Setting Items)	4-2
4.2. Common Setting	4-3
4.3. Host Station Setting	4-4
4.4. Ethernet Setting Screen.....	4-6
4.4.1. Ethernet Radio Master Station Setting Screen	4-6
4.4.2. Ethernet Partner Station Setting Screen	4-7
4.5. Pulse Count Setting Screen.....	4-9
4.6. Expansion Unit Setting Screen.....	4-10
4.6.1. Expansion Setting Screen	4-10
4.6.2. Analog Ch Setting Screen	4-11



1. OVERVIEW

1.1. Overview	1-2
1.2. Disclaimer	1-2
1.3. Operating Environment	1-2
1.4. Target Model	1-2

1.1. Overview

This product is a software application for setting the parameters of our 2.4 GHz Band Wireless units.

1.2. Disclaimer

This product is a utility program for wiring the settings of the Wireless unit.

We assume no responsibility for setting data and malfunctions in the use of this product.

1.3. Operating Environment

The operating environment for this product is as follows:

Item no.	Item	Specifications	Remarks
1	CPU	Pentium 1.7 GHz or higher	—
2	Hard Disk Capacity	20 Mbyte	—
3	Required Memory Capacity	1 GB or higher (recommended)	—
4	OS	Windows 7	—
5	Display Resolution	1024 × 768 or higher; 60,000 colors or more recommended	—
6	Communication Interface	USB port	USB cable (USB Type A - USB Type Mini-B)
7	Others	.net Frameworks4.0*	—

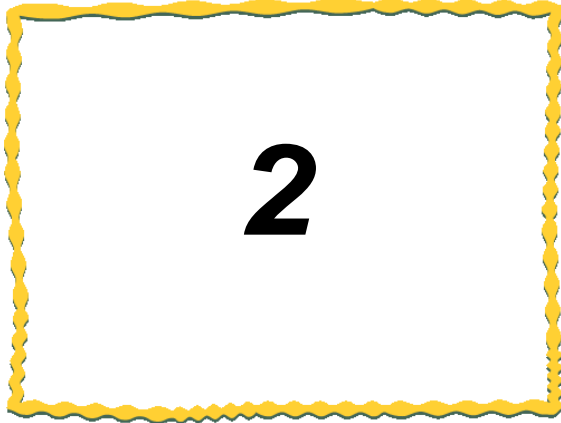
* If it is not installed, please download it from the Microsoft website.

1.4. Target Model

The following two models are target models to set parameters with this product.

(1) SWL31-ETMC

(2) SWL31-R4ML

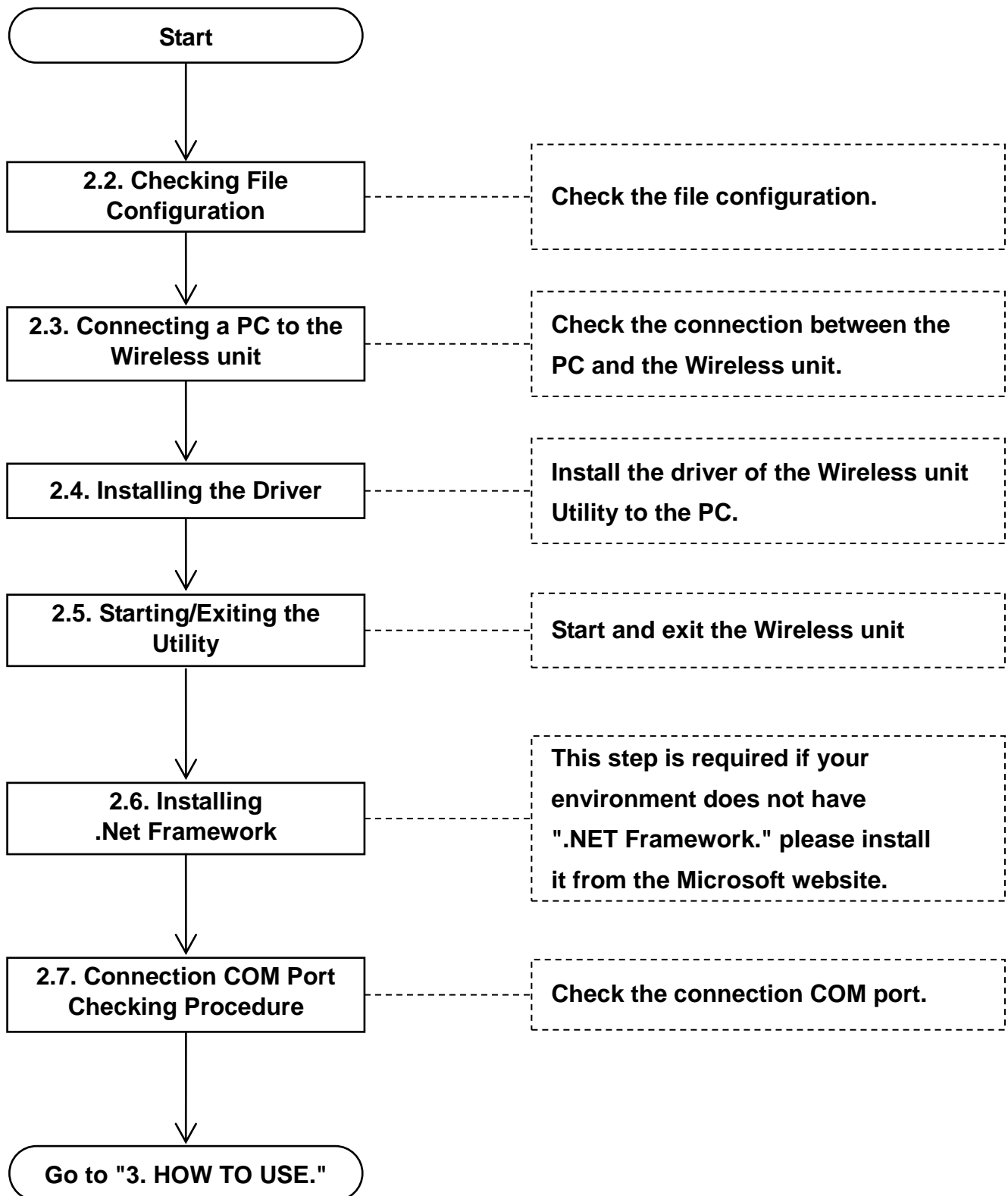


2. UTILITY PREPARATION

2.1. Procedure	2-2
2.2. Checking File Configuration	2-3
2.3. Connecting PC to the Wireless unit	2-3
2.4. Installing the Driver	2-4
2.5. Starting/Exiting the Utility	2-11
2.6. Installing .Net Framework	2-11
2.7. Connection COM Port Checking Procedure	2-12

2.1. Procedure

The utility preparation procedure is described below.



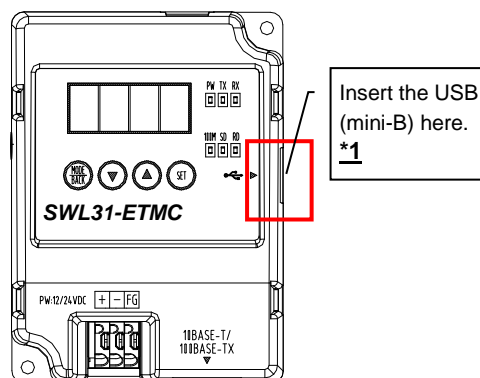
2.2. Checking File Configuration

[For Windows 7]

File name	Details
Download file	
└ SWL31-UT1.exe	The Setting Utility program
└Driver	A driver for PC communication
└CDC_Demo_Win7.inf	
└Util.rci	Manufacturer setting file
└SWL31-UT1_Manual.pdf	This document

2.3. Connecting a PC to the Wireless unit

1. Connect the USB (mini-B) connector to the USB port on the right side of the unit and the USB (A) connector to the PC.



2. Turn on the power while pressing the "SET" button.
 - If the seven segment display shows "USB", starting-up has succeeded.
 - If anything other than "USB" is shown on the seven segment display, please retry again.
 - The USB Mode is activated even when you keep pressing the "SET" button for five seconds while the seven segment display shows "CH" or "E*" (error).

***1. The customer should obtain a USB cable.**

!!! Caution !!!

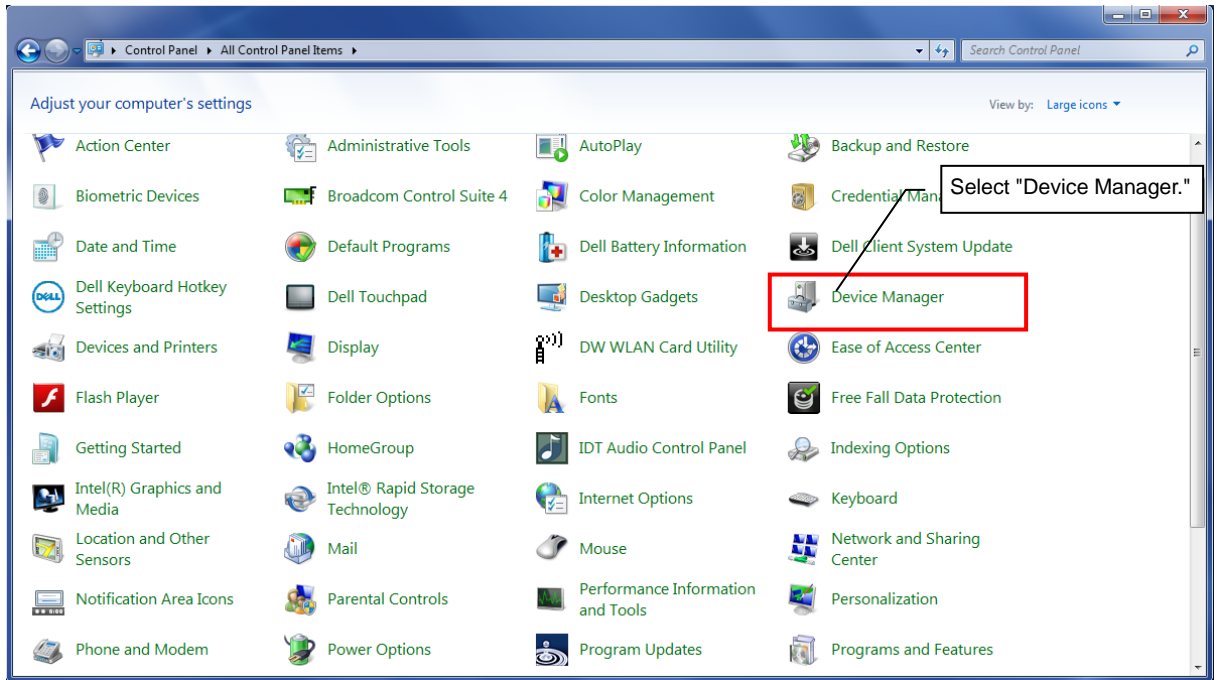
It is recommended that you decide on a port on your PC to connect the Wireless unit if the PC has multiple USB ports. If you change the USB port to connect the Wireless unit, re-installation of the driver will be required.

2.4. Installing the Driver

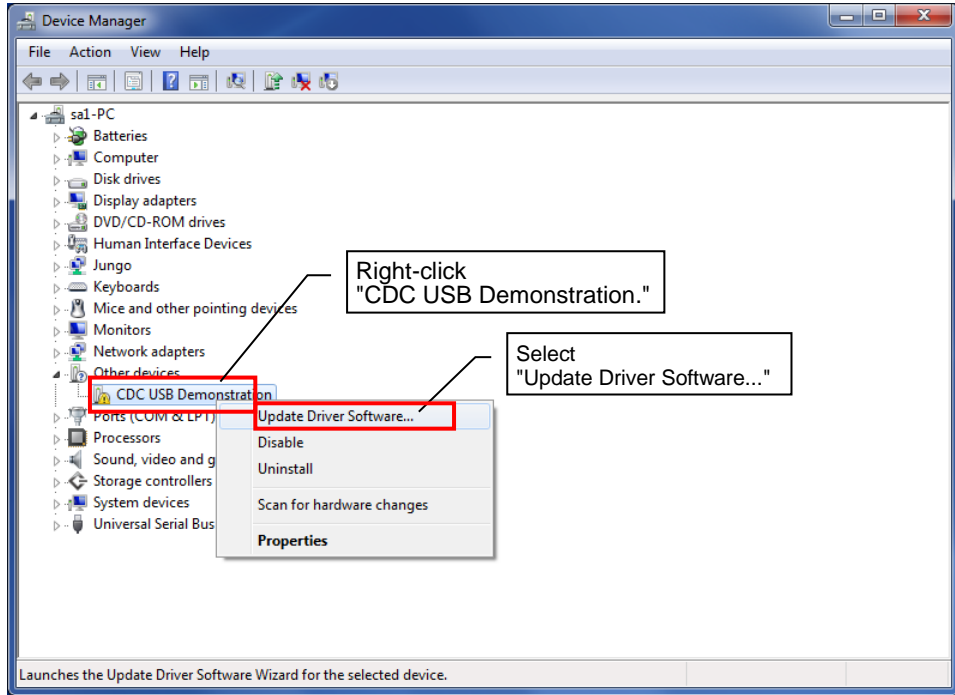
The driver for the Wireless unit Utility is installed to the PC.

1. Start "Device Manager" from "Start" ⇒ "Control Panel."

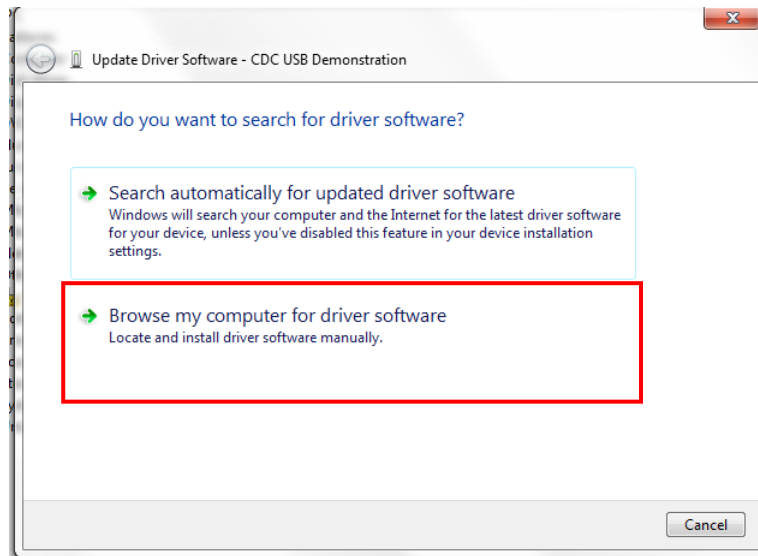
(If the control panel is accessed by the category display, start "Device Manager" from "Start" ⇒ "Control Panel" ⇒ "Hardware and Sound.")



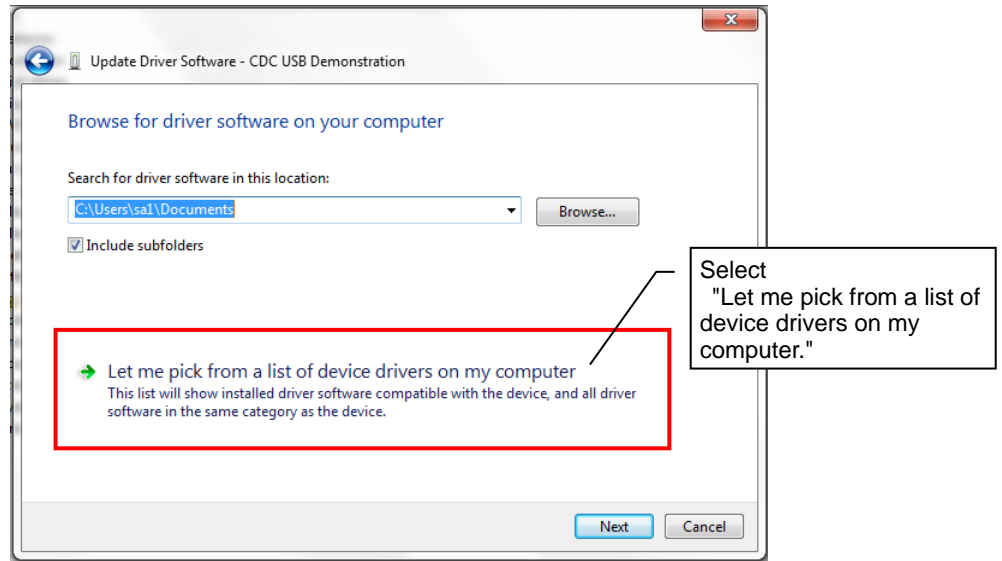
2. Right-click "CDC USB Demonstration" in "Other devices" and select "Update Driver Software..."



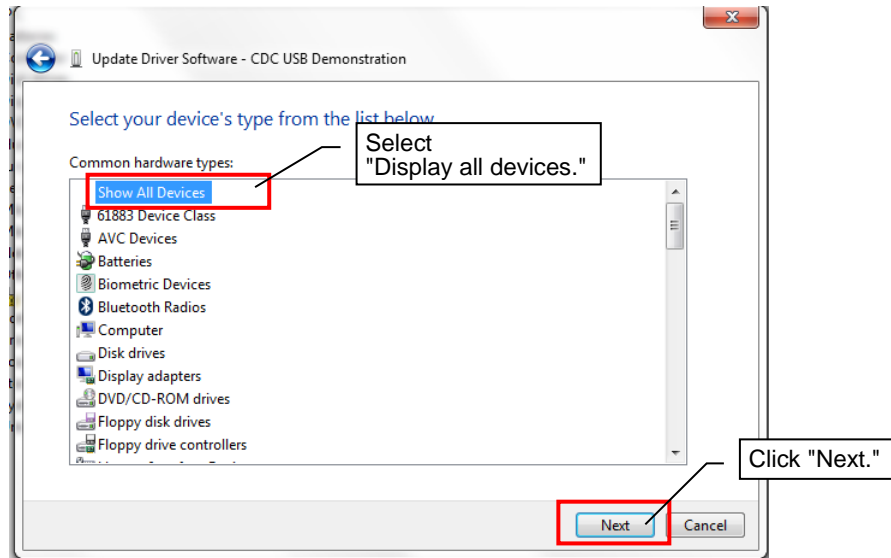
3. The Update Driver Software dialog will be displayed. Select "Browse my computer for driver software."



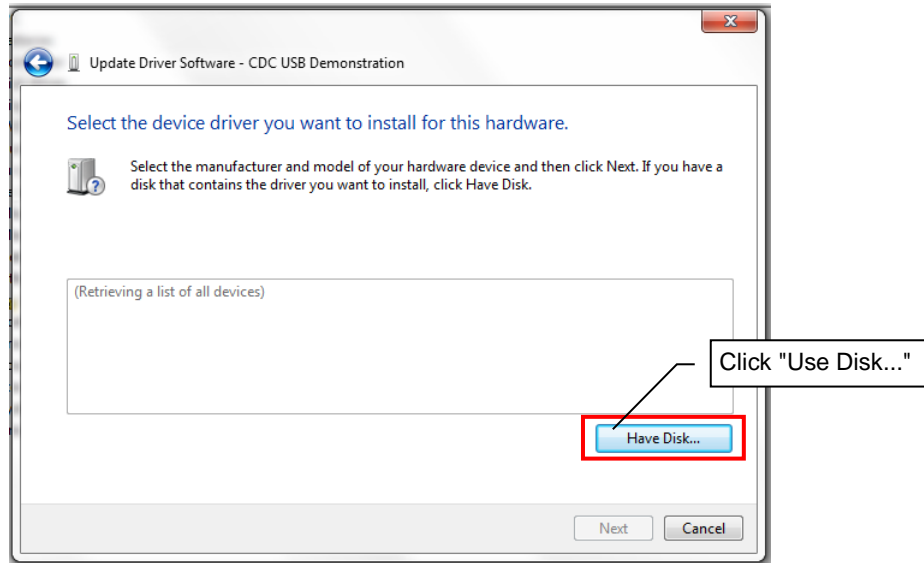
4. Select "Let me pick from a list of device drivers on my computer."



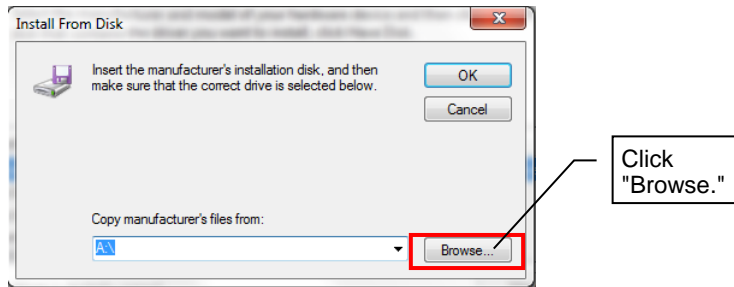
5. The device type selection screen will be displayed. Select "Display all devices" and click "Next."



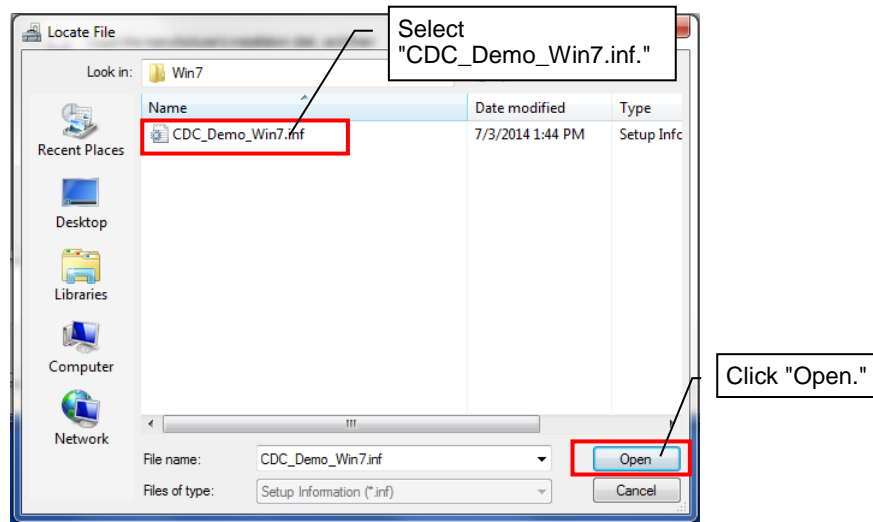
6. The driver selection dialog will be displayed. Click the "Use Disk..."



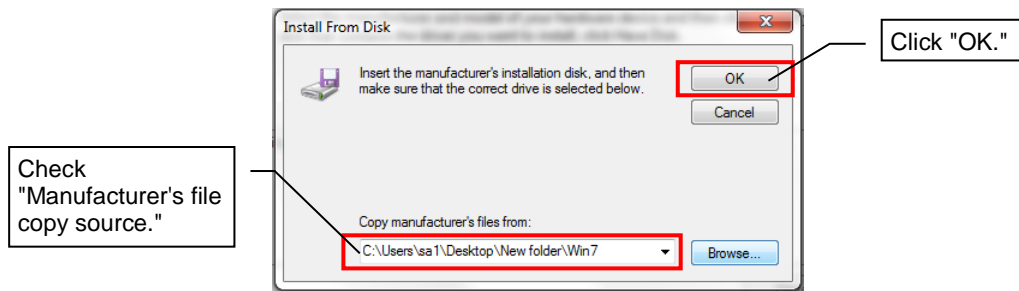
7. The reference source setting dialog will be displayed. Click the "Browse" button.



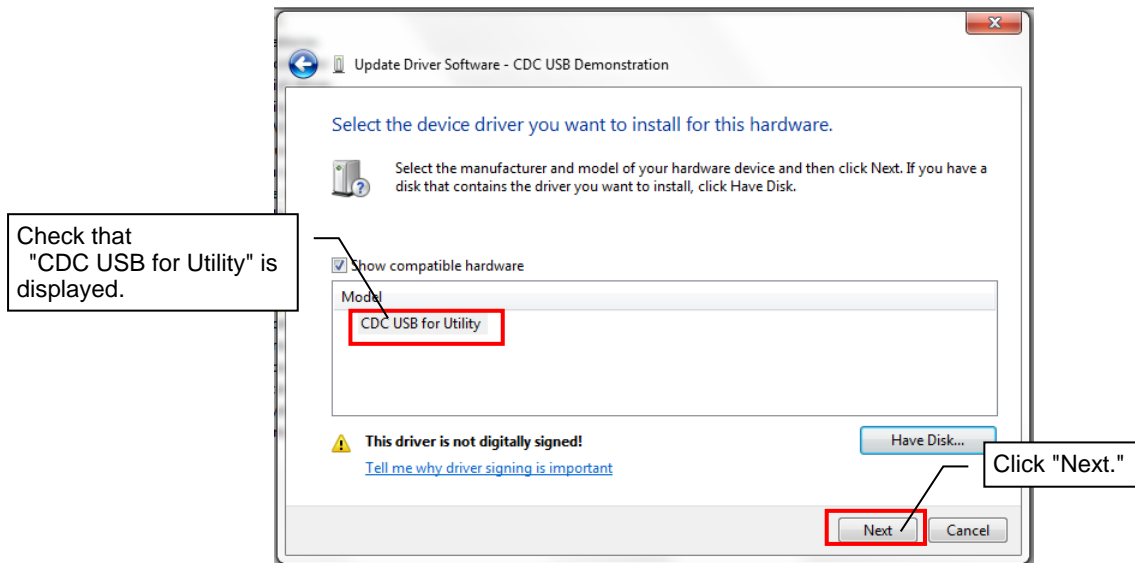
8. The file location specification dialog will be displayed. Select "CDC_Demo_Win7.inf" from "driver" in the download folder and click "Open."



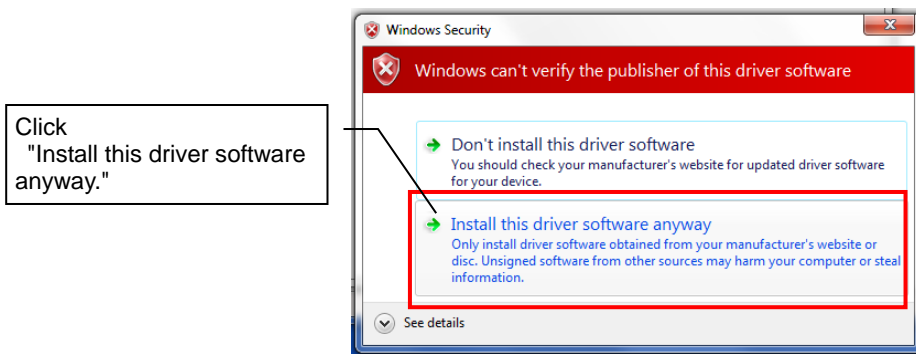
9. Check that the correct address is displayed under "Manufacturer's file copy source" and click the "OK" button.



10. Check that "CDC USB for Utility" is displayed under Model and click "Next."

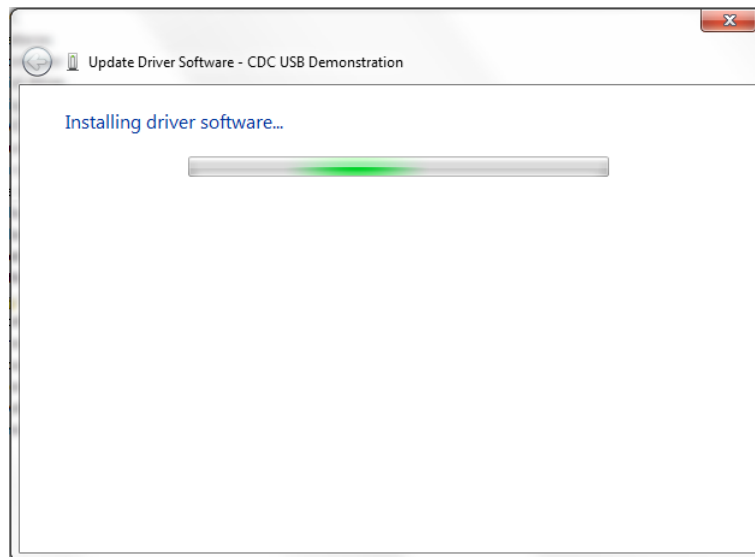


11. The warning dialog below may be displayed. If so, click the "Install this driver software anyway." .



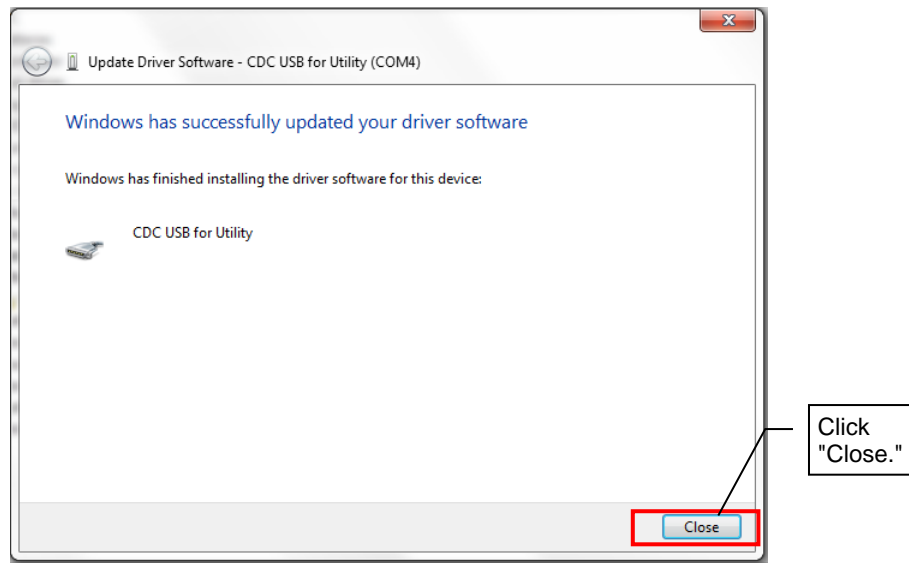
12. The driver software installation will start.

Wait for about five minutes until the installation is complete.



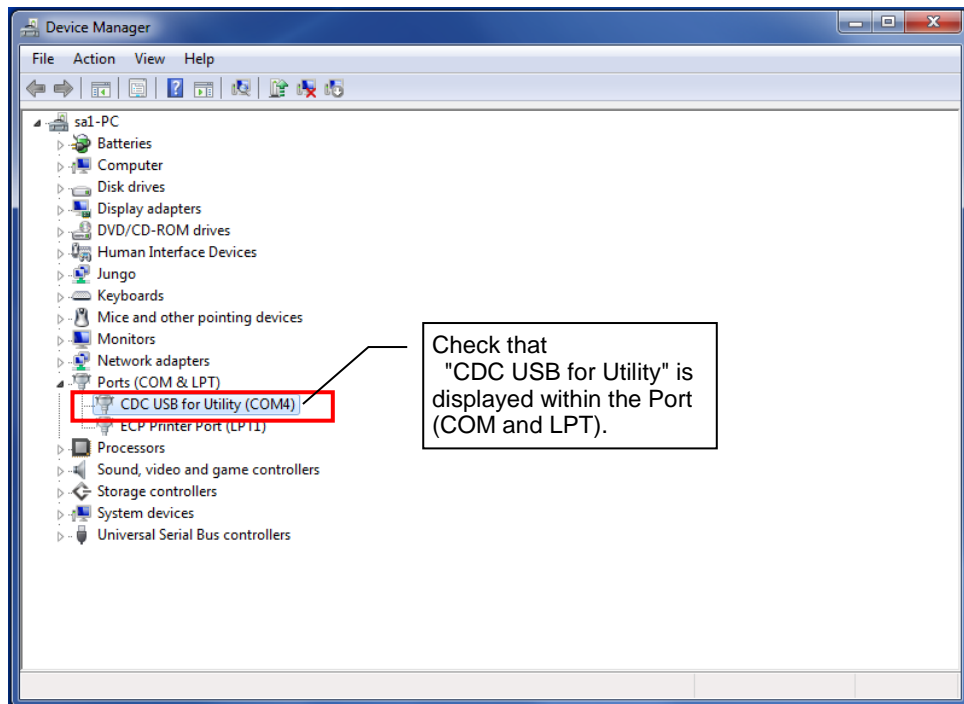
13. When the driver installation is complete normally, the screen below will be displayed.

Click the "Close" button.



14. After the driver installation is complete, check the "Other devices" item (or "CDC USB Demonstration" within the "Other devices" item) has disappeared and "CDC USB for Utility" is displayed within "Port (COM and LPT)" under "Device Manager."

(It is recommended that the port number for CDC USB for Utility be written down since it is used for communication checks.)



Now the driver installation has been completed.

2.5. Starting/Exiting the Utility

- Starting

After the driver is installed, start the Utility.

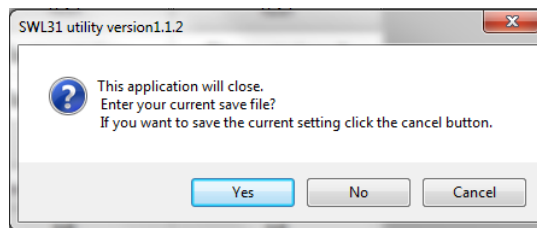
Double-click the downloaded "SWL31-Utility.exe" in the folder to start the Utility.

- Exiting

Click the "X" button at the top right of the screen to display the dialog below.

If the current input data are to be saved, click "Yes (Y)" to save the file and exit the Utility.

If they are not to be saved, click "No (N)" to exit the Utility.



2.6. Installing .Net Framework

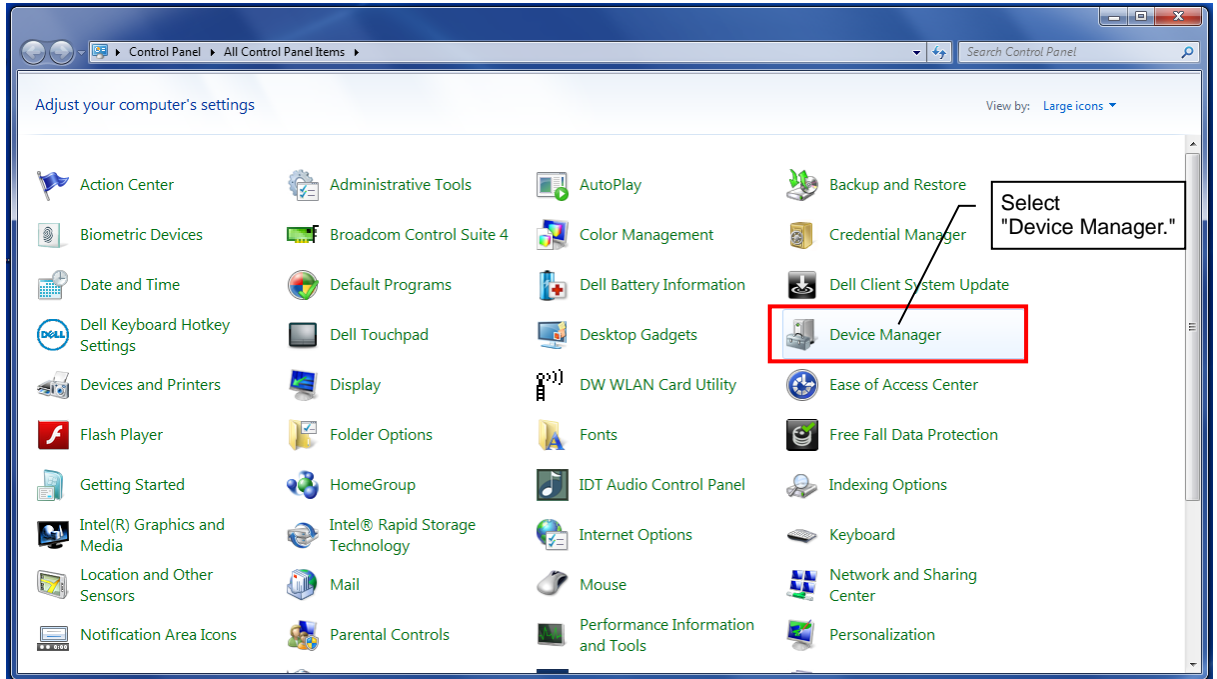
If the dialog below is displayed (when the necessary .Net Framework is not installed), download and install .Net Framework from the Microsoft website.



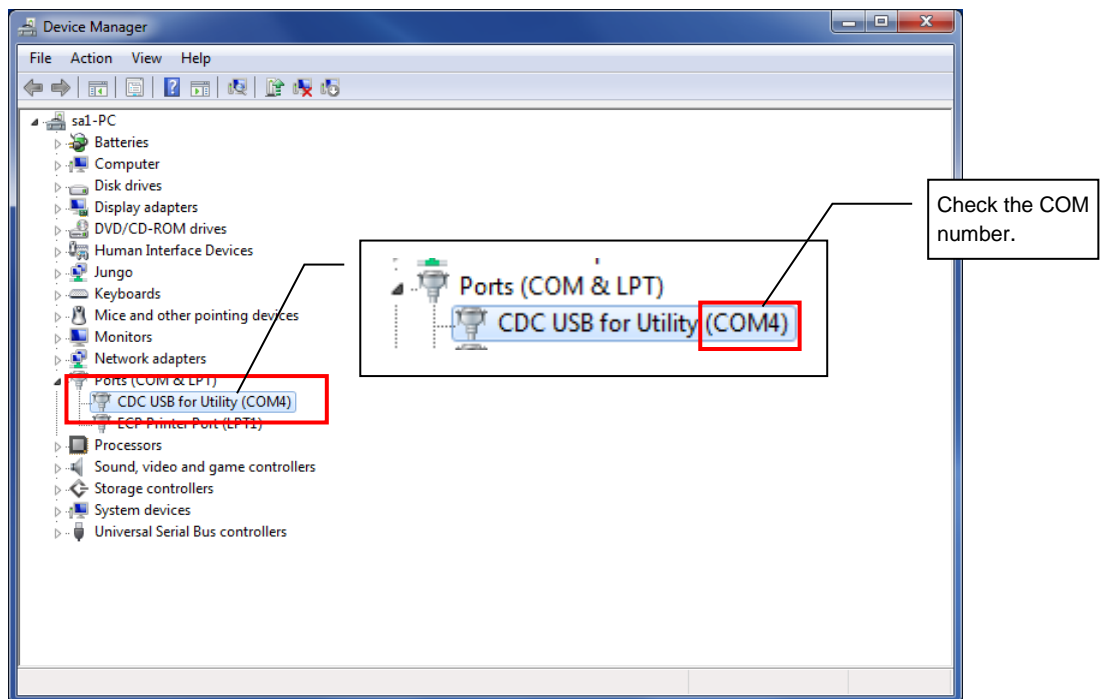
2.7. Connection COM Port Checking Procedure

1. Start "Device Manager" from "Control Panel." ⇒ "start"

(For the category display, start from "Device Manager" ⇒ "Control Panel" ⇒ "Hardware and Sound.")



2. Check the COM number described after "CDC USB for Utility" within "Port (COM and LPT)."





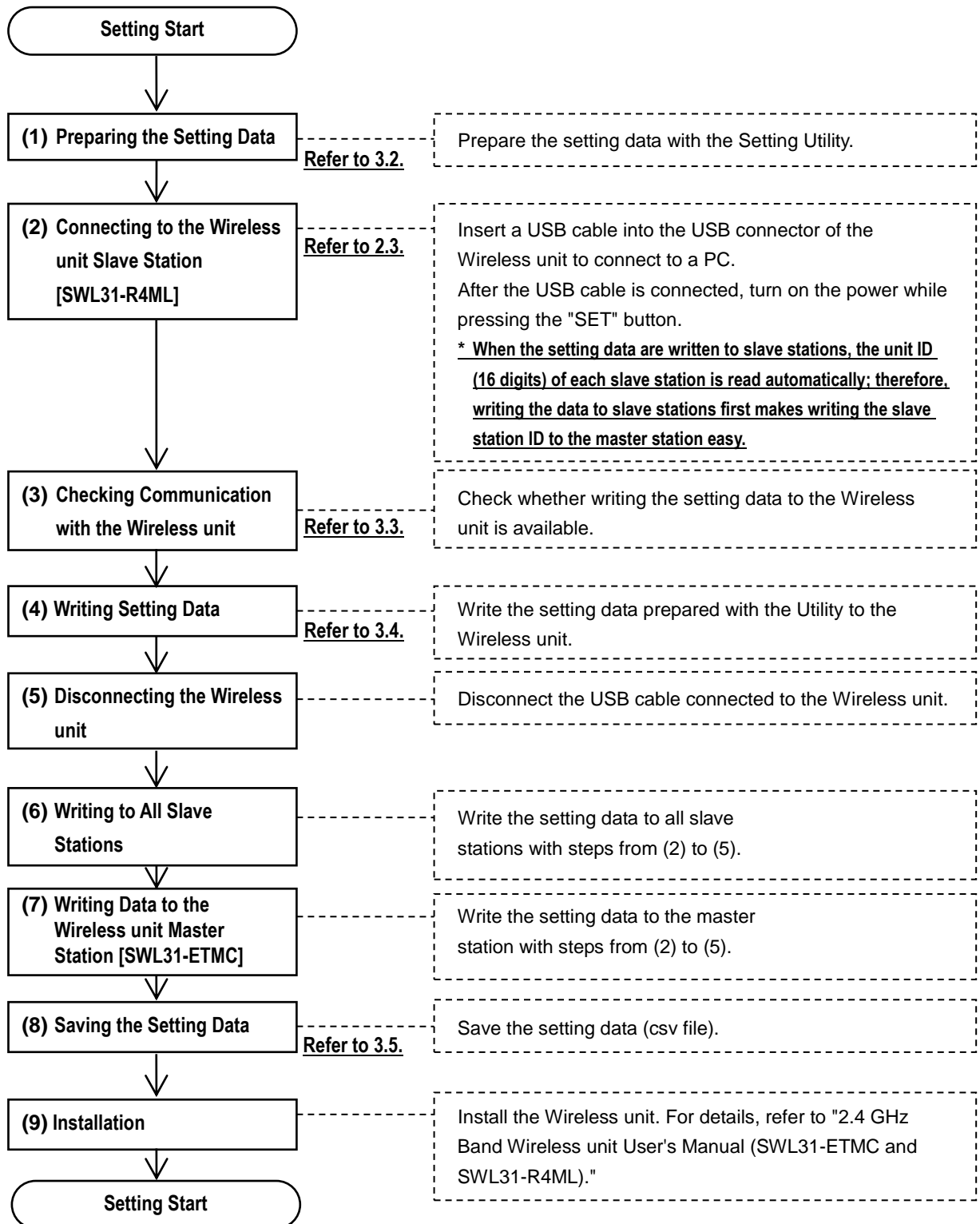
3

3. HOW TO USE

3.1. Procedure of Utility Use.....	3-2
3.2. Preparing Setting Data with Utility.....	3-6
3.3. Checking Communication with the Wireless unit ·	3-7
3.4. Writing the Setting Data to the Wireless unit	3-8
3.5. Saving the Setting Data File	3-10
3.6. Reading the Saved Setting Data File.....	3-11
3.7. Reading the Setting Data from the Wireless unit	3-12
3.8. Initializing Parameters.....	3-13

3.1. Procedure of Utility Use

3.1.1. When the Unit is Newly Installed



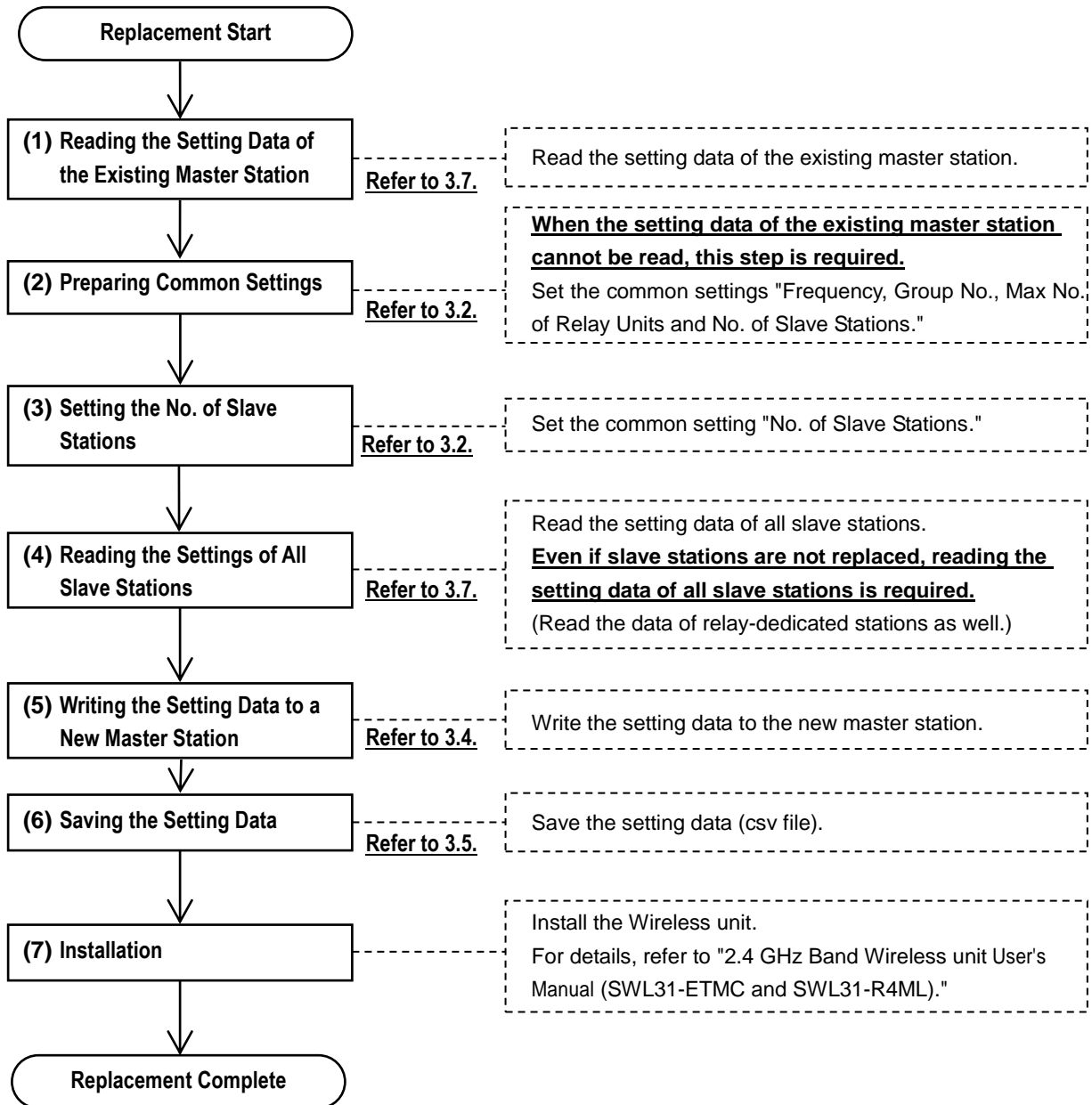
!!! Caution !!!

It is recommended that you decide on a port on your PC to connect the Wireless unit if the PC has multiple USB ports. If you change the USB port to connect the Wireless unit, re-installation of the driver will be required.

3.1.2. When the Master Station [SWL31-ETMC] is Replaced

When the master station is replaced, the setting data prepared when the existing system has been installed shall be written to the new Wireless unit master station.

If the setting data for the existing system configuration does not exist, the unit shall be replaced according to the procedure below.



!!! Caution !!!

○ Do not write the setting data read from the existing master station alone to the new master station.
 If the setting data of slave stations are not reflected, communications may be unavailable.

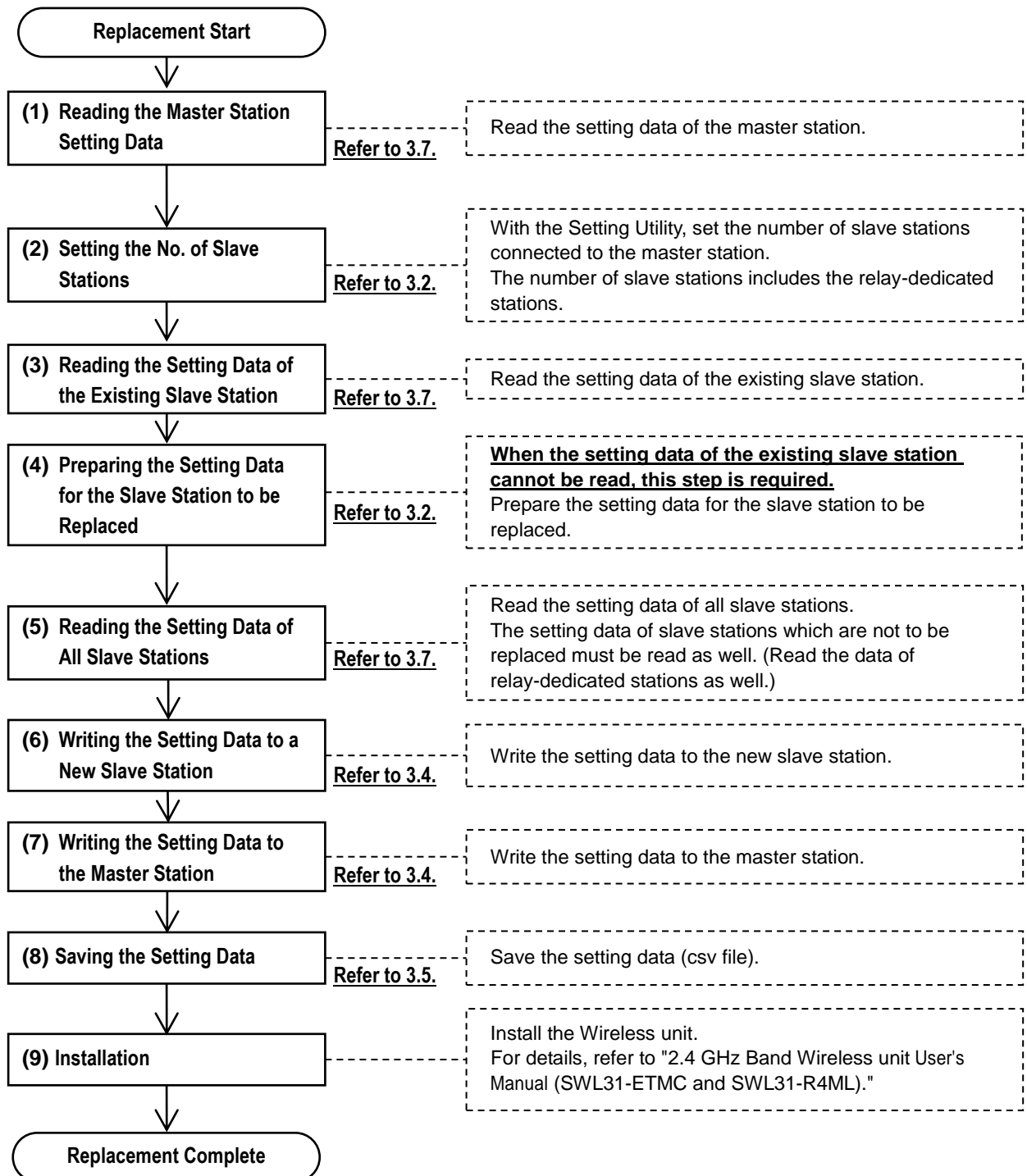
3.1.3. When the Slave Station [SWL31-R4ML] is Replaced

When the slave station is replaced, the setting data prepared when the existing system has been installed shall be written to the new slave station first and then the master station.

* When the data is written to the new slave station, the unit ID of the new slave station is read automatically.

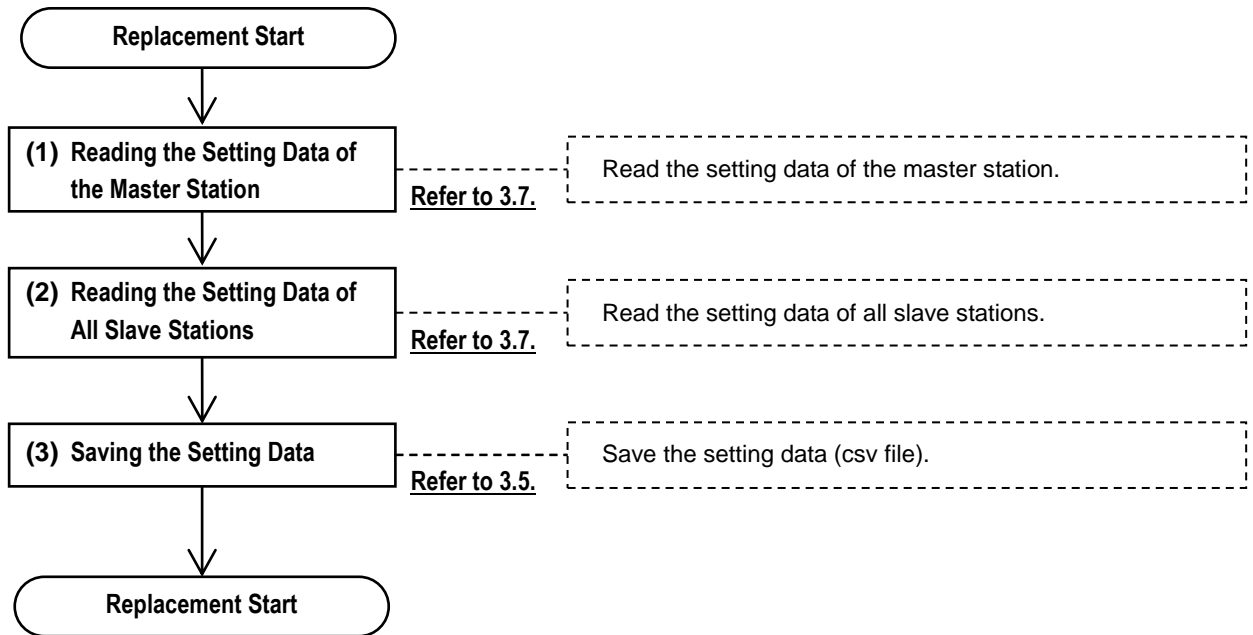
Overwrite the master station with the unit ID setting.

If the setting data for the existing system configuration does not exist, the unit shall be replaced according to the procedure below.



3.1.4. For Wireless unit Setting Data Backup

For Wireless unit setting data backup, prepare backup data according to the procedure below.



3.2. Preparing Setting Data with Utility

The setting data to be written to the Wireless unit is prepared.

After all common settings, master station settings and slave station settings are prepared, "3.4 Writing Setting Data to Wireless unit" shall be carried out.

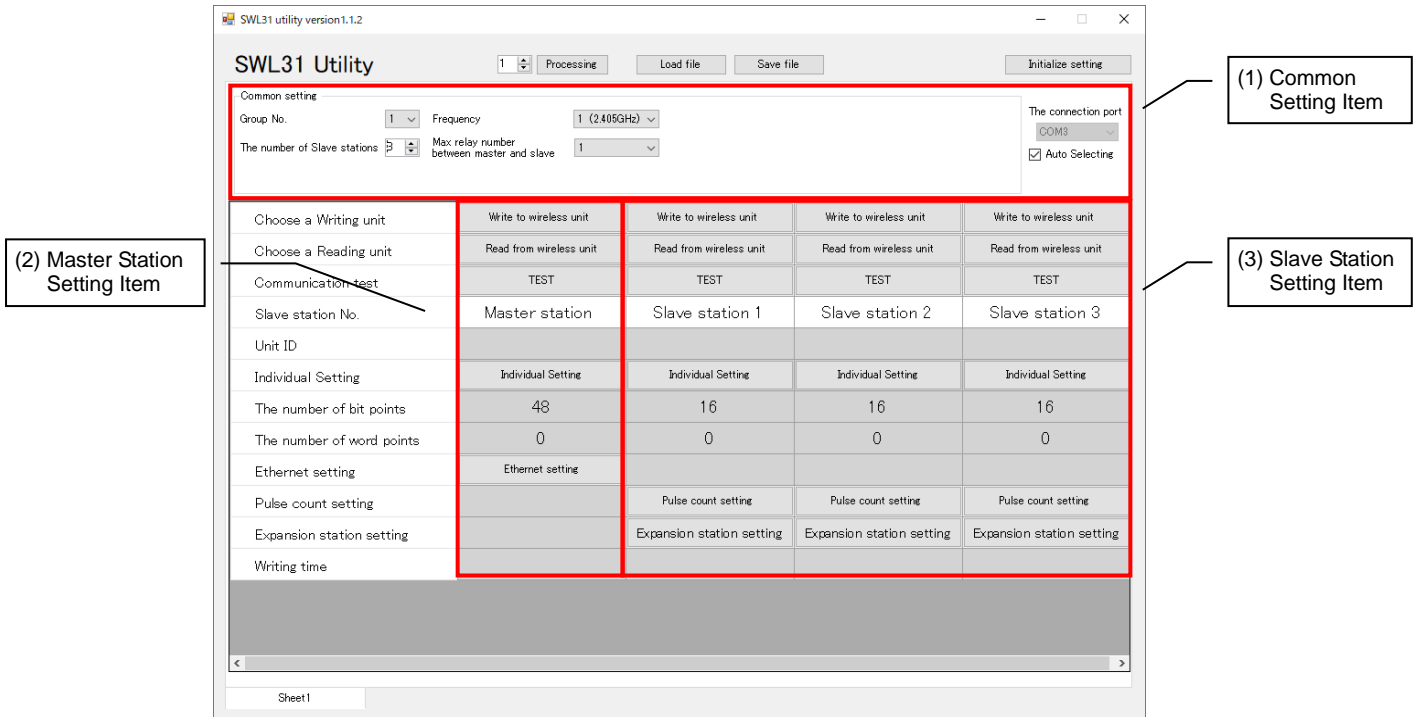


Figure 3.2 Each Setting Item

(1) Common Setting Item

Items that it shared by the master station and slave stations are set. They are Group No., Selected Frequency, No. of Slave Stations and other items.

(2) Master Station Setting Item

Master station-related settings such as Ethernet Setting are set.

(3) Slave Station Setting Item

Slave station-related settings are set. They are Expansion Connection Existence, Pulse Count and other items.

For details of each setting, refer to "4 Utility SCREEN DETAIL."

3.3. Checking Communication with the Wireless unit

Connections with the Wireless unit shall be checked with the procedure below.

1. Select the COM port to which the Wireless unit is connected under "Connection Port" at the top right of the main screen.
 - * For the connection port, refer to "2.7 Connection COM Port Checking Procedure."
2. Click the "TEST" button of the communication target (master station/slave station) to check the communication.

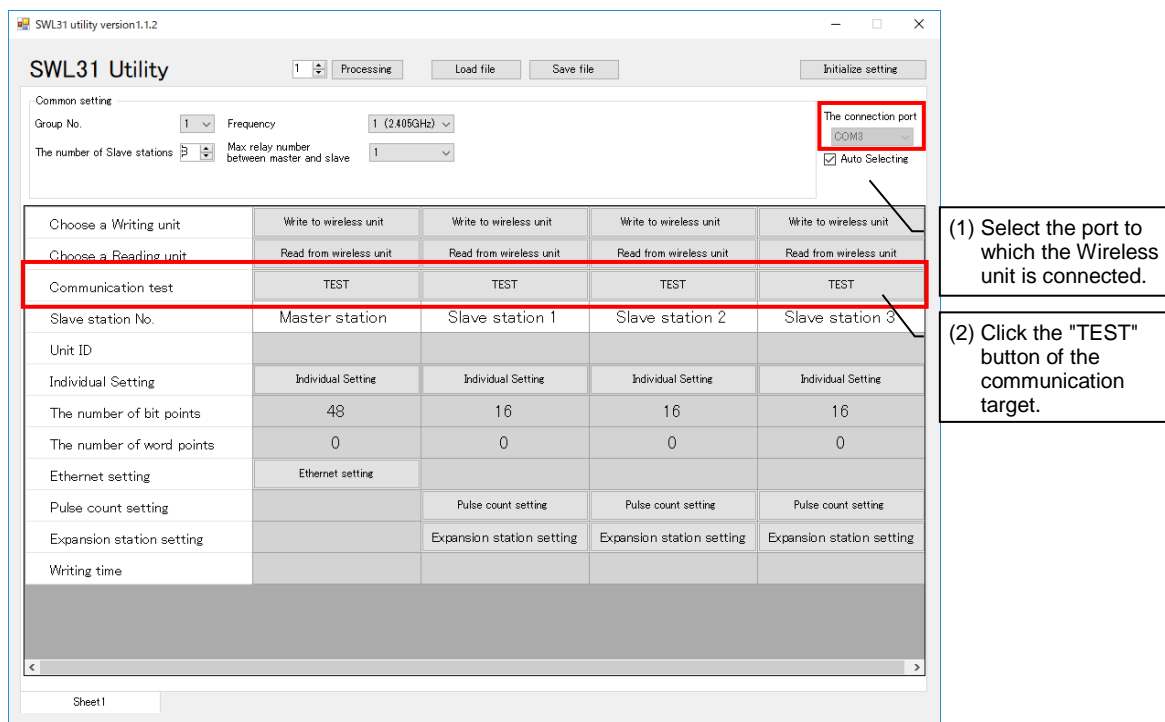


Figure 3.3-1 Checking the Connection

If the connection is normal, the dialog below will be displayed.

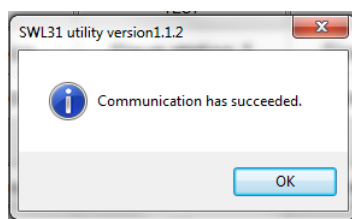


Figure 3.3-2 Normal Communication Dialog

If the connection is not normal, following dialog below will be displayed.

Check the COM port and connection target. (For COM port checking, refer to Section 2.7.)

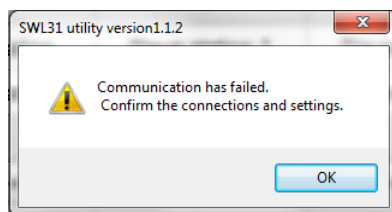


Figure 3.3-3 Abnormal Communication Dialog

3.4. Writing the Setting Data to the Wireless unit

After the setting data to be registered to the Wireless unit are prepared, click "Write to Wireless unit" of the slave station number which is the writing target to write the setting data.

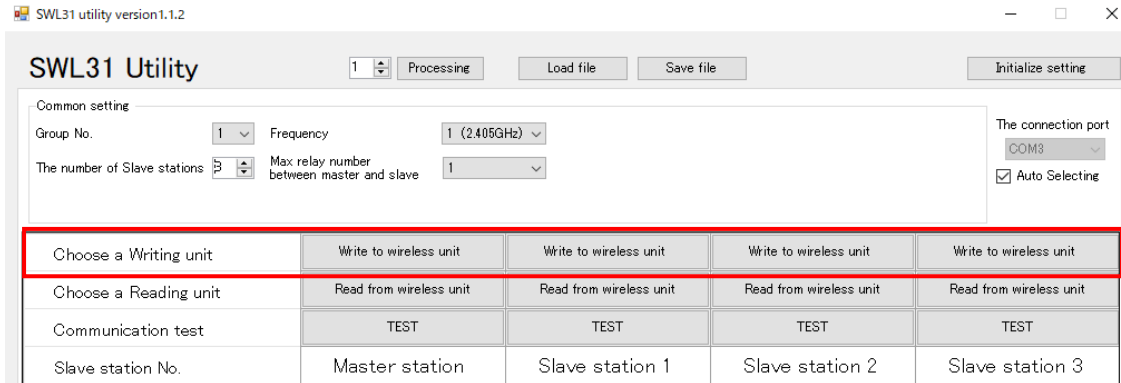


Figure 3.4-1 Writing to the Wireless unit

If the setting data are correct, the dialog below will be displayed.

Check the writing destination displayed and click the "OK" button to write the setting data.

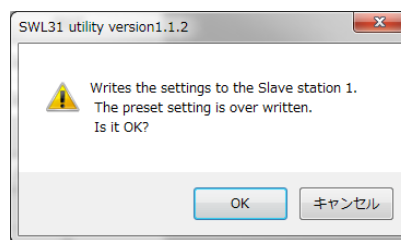


Figure 3.4-2 Writing Confirmation Dialog

If there is a slave station without a unit ID input when the setting data are written to the master station, the dialog below will be displayed.

Write the setting data to the slave station first (the unit ID is read automatically at that time), or check the parameter P102 of the slave station by operating the button of the unit and input the unit ID.

For details of button operation, refer to "2.4 GHz Band Wireless unit User's Manual (SWL31-ETMC and SWL31-R4ML)."

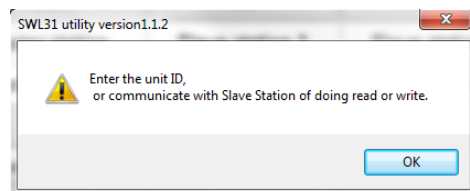


Figure 3.4-3 Unregistered Unit ID Confirmation Dialog

When writing to the Wireless unit is complete, the dialog below is displayed.

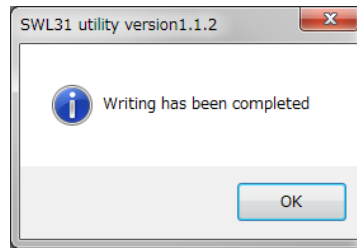


Figure 3.4-5 Writing Completion Dialog

!!! Caution !!!

Until the dialog is displayed, be sure to comply with the items below. If not, breakdowns may occur.

- **Do not turn off the power of the Wireless unit.**
- **Do not interrupt the communication between a PC and the Wireless unit by pulling out a USB cable or the like.**

3.5. Saving the Setting Data File

The setting data written to the Wireless unit are saved in "CSV file."

Click the "Save File" button at the top of the screen.

Click "Save File."

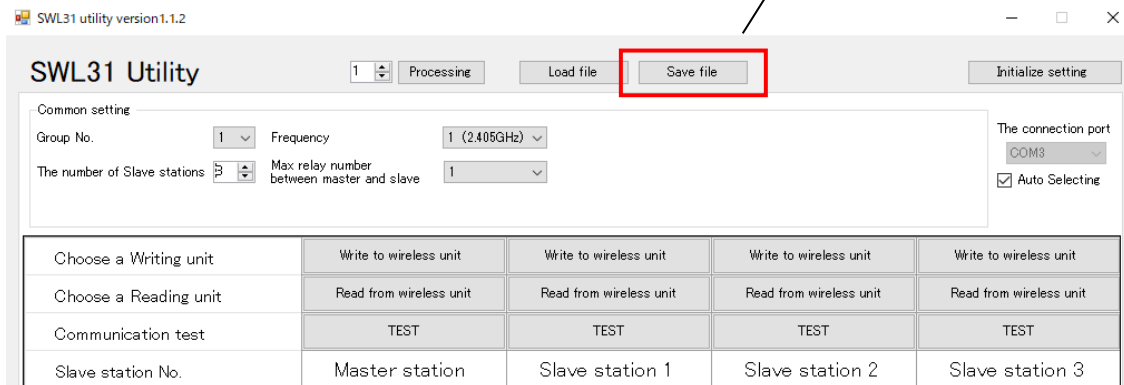


Figure 3.5-1 Writing to the Wireless unit

Clicking "Save File" displays the file saving dialog. Select the saving location and file name and click the "Save" button.

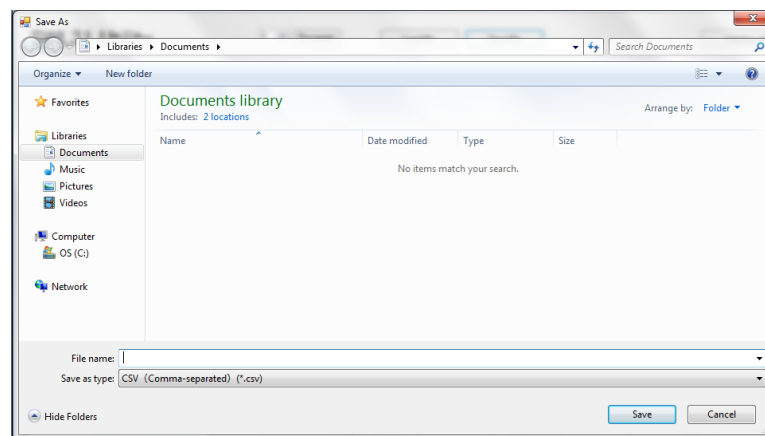


Figure 3.5-2 File Saving Dialog

*** If the saved CSV file is edited, reading the file with the Utility will be unavailable.**

If the setting data are to be edited, be sure to use this product for editing.

3.6. Reading the Saved Setting Data File

The setting data saved in "CSV file" is read.

Click "Load File" at the top of the screen.

Click "Load File."

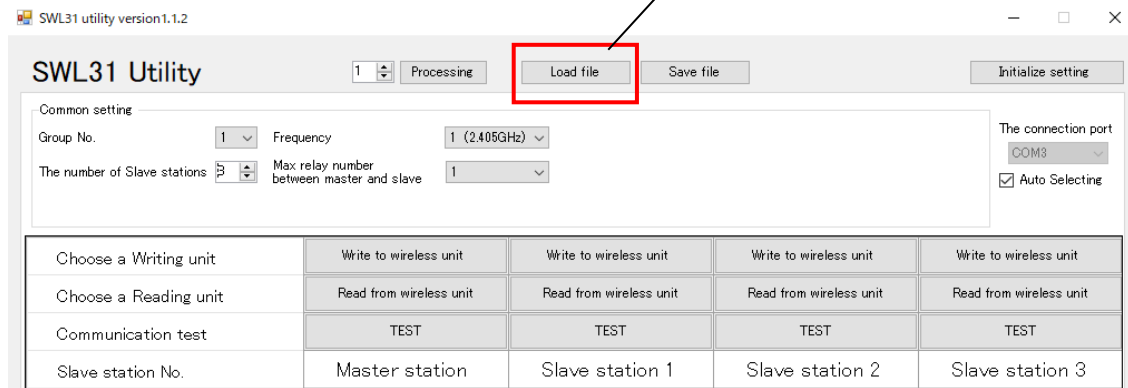


Figure 3.6-1 Reading from CSV File

Clicking "Load File" displays the file reading dialog. Select the file to be read and click the "Open" button.

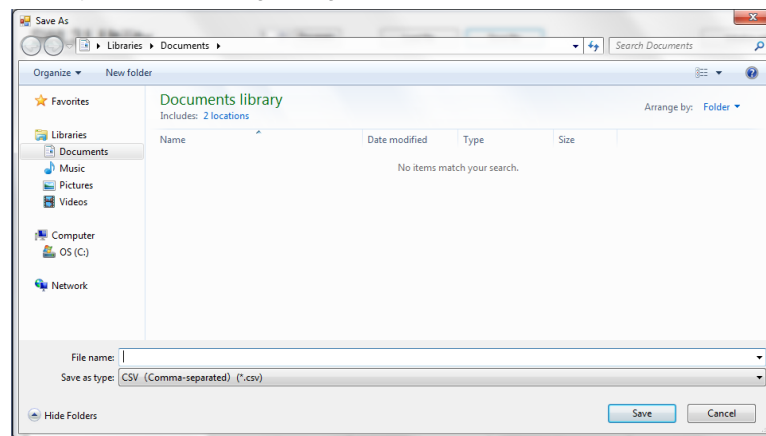


Figure 3.6-2 File Reading Dialog

*** If a CSV file that has been edited with a program other than this product is read, the dialog below will be displayed and reading will be unavailable. If the setting data are to be edited, be sure to use this product for editing.**

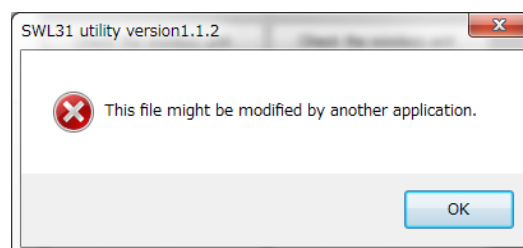


Figure 3.6-3 Read Error Dialog

3.7. Reading the Setting Data from the Wireless unit

The setting data set to the Wireless unit are read on the Utility.

Click "Read from the Wireless unit" of the slave station number to be read.

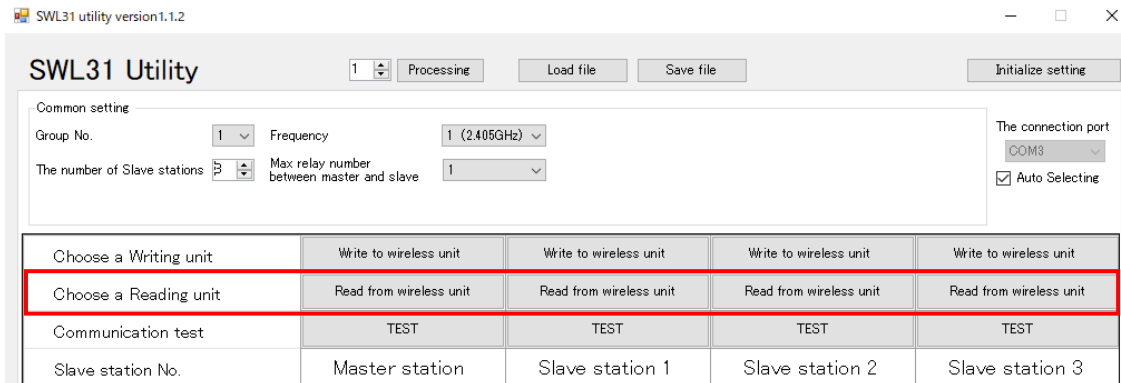


Figure 3.7-1 Reading to the Wireless unit

The following file read confirmation dialog will be displayed. Click "OK."

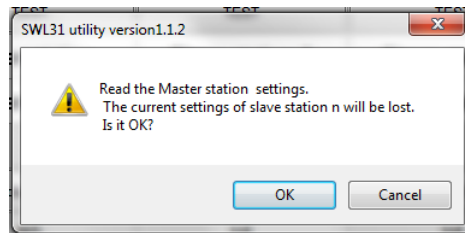


Figure 3.7-2 File Read Confirmation Dialog

!!! Caution !!!

○ Do not write the setting data read from the master station alone (without the setting data read from the slave stations) to the master station to be replaced.

If the setting data of slave stations are not reflected, radio communications may be unavailable.

(For details, refer to "3.1.2 When the Master Station [SWL31-ETMC] is Replaced.")

○ Reading the setting data overwrites the data edited with the Setting Utility.

3.8. Initializing Parameters

To reset the setting data to default, click "Initialize Settings."

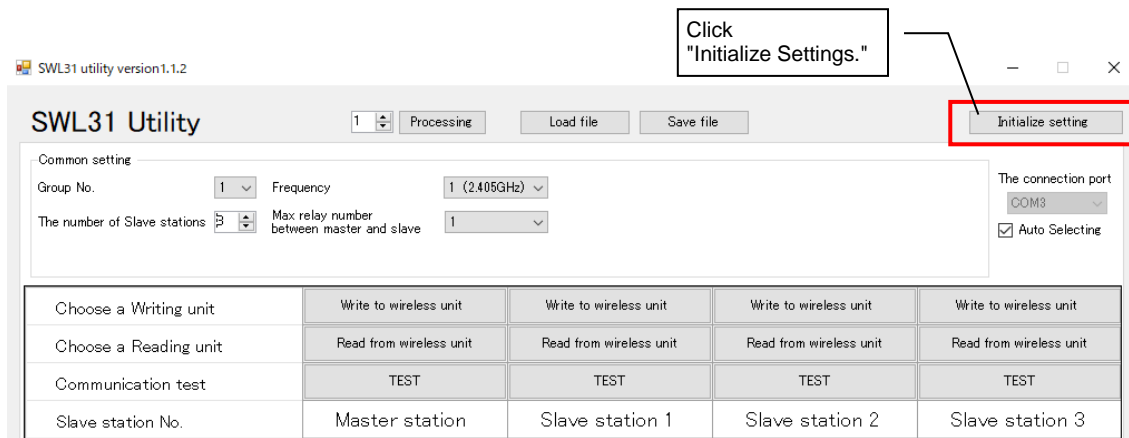


Figure 3.8-1 Reading to the Wireless unit

The initialization confirmation dialog below will be displayed. Check the details and click the "OK" button if there is no problem.

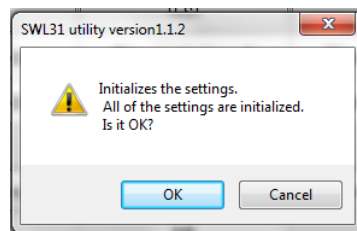
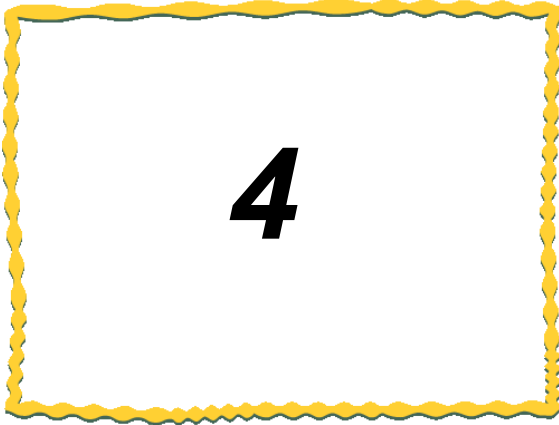


Figure 3.8-2 Initialization Confirmation Dialog

Clicking the "OK" button initializes the setting items on the sheet.

(The setting items of other tags will not be initialized.)



4. SCREEN DETAIL

4.1. Main Screen	4-2
4.2. Common Setting	4-3
4.3. Host Station Setting	4-4
4.4. Ethernet Setting Screen	4-5
4.5. Pulse Count Setting Screen	4-9
4.6. Expansion Unit Setting Screen.....	4-10

4.1. Main Screen (Common Setting Items)

On the main screen, settings shared by the master station and slave stations and settings required by the host station are configured.

With the setting screen transfer buttons, the function setting screens are called up.

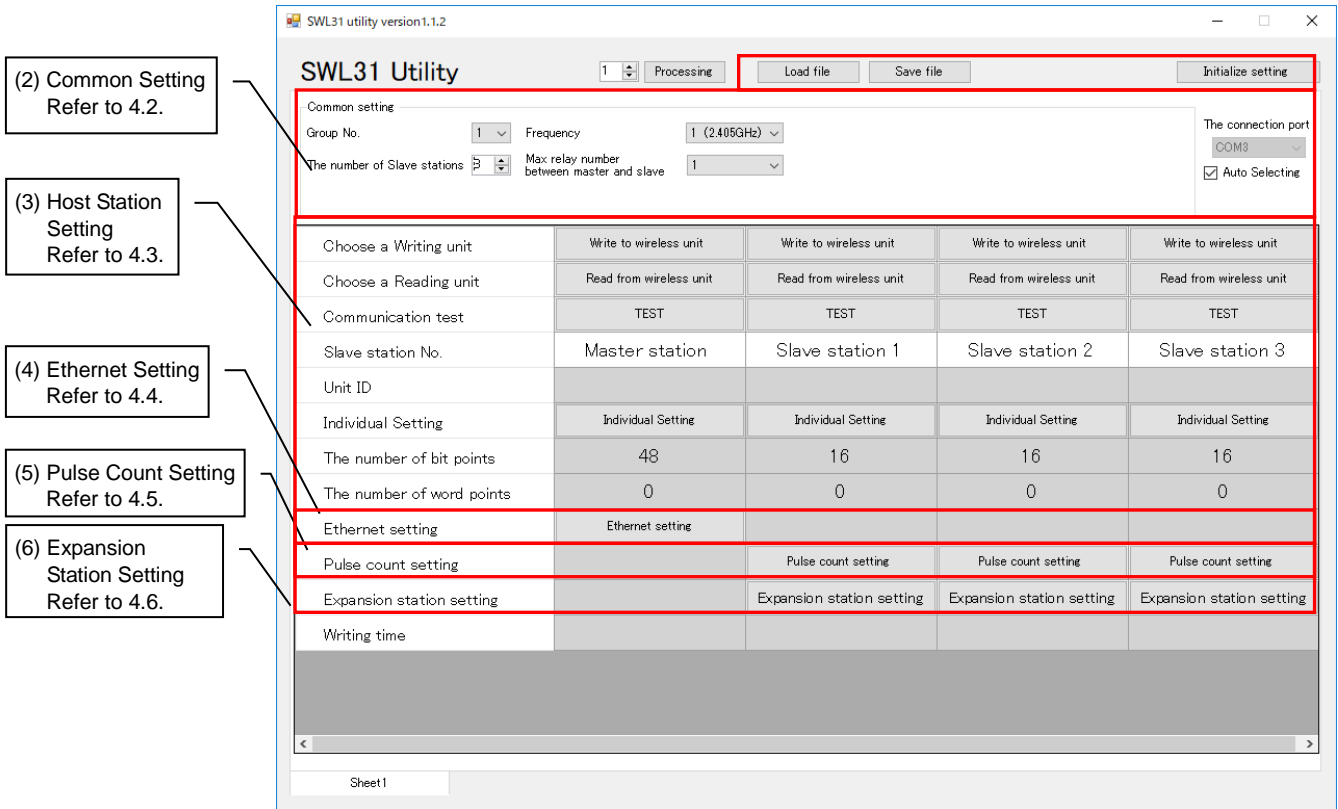


Figure 4.1-1 Main Screen

The main screen has the items below.

For details of each item, refer to the reference section of each item.

Table 4.1 Main Screen Item

No.	Name	Details	Reference section
(1)	File Operation Button	Executes file saving/reading and Wireless unit writing/reading.	3
(2)	Common Setting	Configures settings shared by the master station and slave stations for communications.	4.2
(3)	Host Station Setting	Configures settings for operations of each unit.	4.3
(4)	Ethernet Setting	Configures the setting for the Ethernet communications. (Only the master station)	4.4
(5)	Pulse Count Setting*	Configures the setting for the pulse count function of the slave stations. (Only the slave stations)	4.5
(6)	Expansion Station Setting*	Configures the setting for the expansion units connected to the slave stations. (Only the slave stations)	4.6

* For details of each function, refer to "2.4 GHz Band Wireless unit User's Manual (SWL31-ETMC and SWL31-R4ML)."

4.2. Common Setting

Under the Common Setting, setting items shared by the master station and slave stations are configured for radio communications.

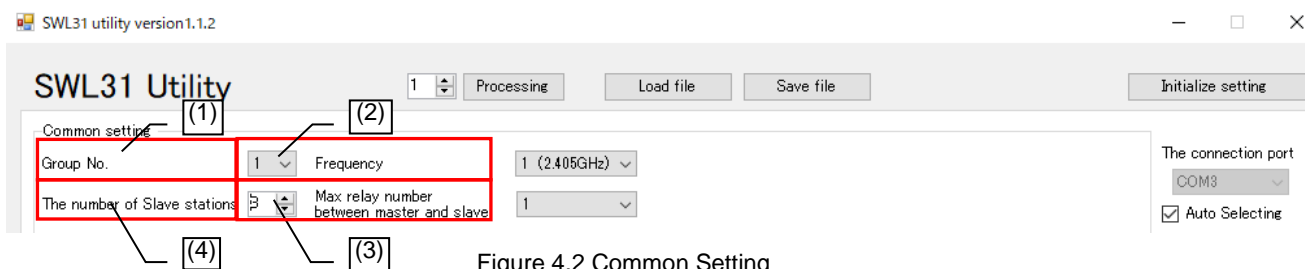


Figure 4.2 Common Setting

Table 4.2 Common Setting Item

No.	Name	Details	Setting range
(1)	Group No.	Set the Group No. of radio communications. The Group No. shall be set when multiple systems are used within the same area.	0 to 15
(2)	Selected Frequency	Select the frequency to be used for radio communications.	1: 2.405 GHz, 2: 2.410 GHz, 3: 2.415 GHz, 4: 2.420 GHz, 5: 2.425 GHz, 6: 2.430 GHz, 7: 2.435 GHz, 8: 2.440 GHz, 9: 2.445 GHz, 10: 2.450 GHz, 11: 2.455 GHz, 12: 2.460 GHz, 13: 2.465 GHz, 14: 2.470 GHz, 15: 2.475 GHz
(3)	Max No. of Relay Units	Set the max no. of relay units allowed between the master station and the terminal slave station.	0 to 3
(4)	No. of Slave Stations	Set the number of slave stations (relay-dedicated stations included) which communicate with the master station. The number of slave stations displayed on the sheet depends on the No. of Slave Stations.	1 to 40

* For details of each function, refer to "2.4 GHz Band Wireless unit User's Manual (SWL31-ETMC and SWL31-R4ML)."

4.3. Host Station Setting

For host station settings, Unit ID, Output Power and other operations of each unit are configured. Setting items below are to be configured when the polling communication is selected for the radio communication configuration.

(1)	Choose a Writing unit	Write to wireless unit	Write to wireless unit	Write to wireless unit	Write to wireless unit
	Choose a Reading unit	Read from wireless unit	Read from wireless unit	Read from wireless unit	Read from wireless unit
	Communication test	TEST	TEST	TEST	TEST
(2)	Slave station No.	Master station	Slave station 1	Slave station 2	Slave station 3
	Unit ID				
(3)	Individual Setting	Individual Setting	Individual Setting	Individual Setting	Individual Setting
(4)	The number of bit points	48	16	16	16
	The number of word points	0	0	0	0

Figure 4.3 Host Station Setting

The screenshot shows the SWL31 Utility software interface. The main window has a 'Common setting' section with fields for Group No., Frequency, The number of Slave stations, and Max relay number. Below this is a table for individual station settings. A pop-up window titled 'Individual Setting' is open for 'Slave station 1', showing detailed configuration options for that station.

Common setting:

- Group No.: 1
- Frequency: 1 (2.405GHz)
- The number of Slave stations: 1
- Max relay number between master and slave: 1

Individual Setting (Slave station 1):

- Slave station No.: Slave station 1
- Unit Type: SWL31-R4ML(Slave including relay station)
- Operation: Normal station
- Wireless Timeout time(sec) (polling communication): 0.0
- Data during error: Clear
- The output of the error terminal: a contact
- Radio Output power: 6.3mW(8dBm)

Table in the main window:

Choose a Writing unit	Write to wireless unit	Write to wireless unit
Choose a Reading unit	Read from wireless unit	Read from wireless unit
Communication test	TEST	TEST
Slave station No.	Master station	Slave station 1
Unit ID		
Individual Setting	Individual Setting	Individual Setting
The number of bit points	16	16
The number of word points	0	0
Ethernet setting	Ethernet setting	
Pulse count setting		Pulse count setting
Expansion station setting		Expansion station setting
Writing time		

Table 4.3 Host Station Setting Item

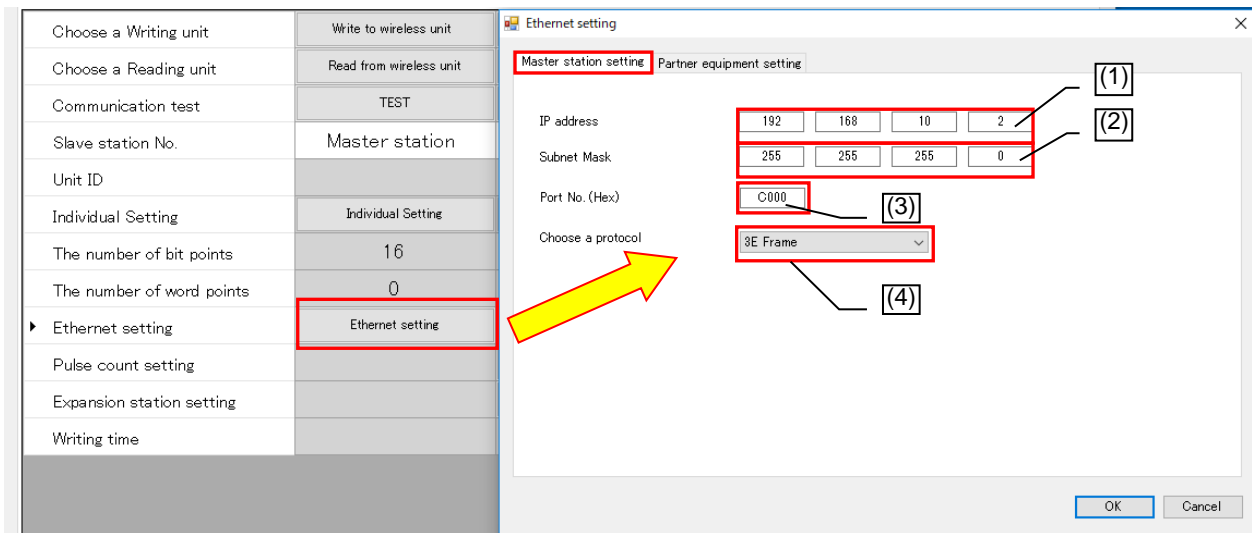
No.	Name	Details	Setting range
(1)	Slave Station No.	The number of the unit when communications are exchanged. The communication order and device assignment is executed according to the Slave Station No.	-
(2)	Unit ID	Set the Unit ID required when the slave stations are registered to the master station. It is read automatically when the setting data are written to the slave station.	0000 0000 0000 0000 to FFFF FFFF FFFF FFFF
(3)	The number of Bit Points	Master station: The total bit points of all slave stations is displayed. Slave station: The total bit points used by the host station is displayed.	Cannot be set (automatic calculation).
(4)	The number of Word Points	Master station: The total of word points of all slave stations is displayed. Slave station: The total of word points used by the host station is displayed.	Cannot be set (automatic calculation).
(5)	Operation	Set the operation of the slave station. Set Normal Station for normal use stations, Relay Station for relay-dedicated stations and Reserve Station for stations to be added in the future.	Normal Station Relay Station Reserve Station
(6)	Wireless Timeout Time	Set the timeout time when a radio communication error occurs. For 0.0, automatic calculation is applied.	0.0 to 600.0 [sec]
(7)	Data during Error	Set the handling of output data when an error occurs. *The following settings are only for the master station. Bit Clear, Word Hold Bit Hold, Word Clear	Clear/Hold Bit Clear, Word Hold Bit Hold, Word Clear
(8)	The output of error terminal	Set the output signal of the error terminal when an error occurs.	LIVE Signal, a Contact, b Contact
(9)	Radio Output Power	Set the transmission output for radio communications.	6.3 [mW]/4.0 [mW]/ 2.5 [mW]/1.6 [mW]/ 0.6 [mW]
(10)	Writing Time	Displays the time when parameters were written to the wireless unit.	yyyy/MM/dd hh:mm:ss

4.4. Ethernet Setting Screen

On the Ethernet Setting screen, Ethernet communication-related settings are configured.

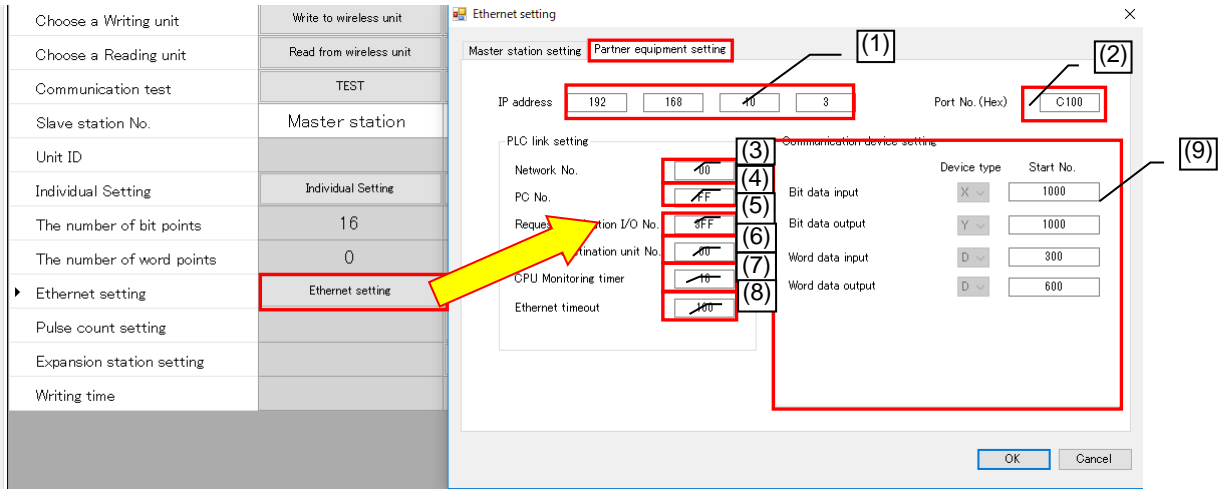
On the Ethernet Radio Master Station Setting screen, the host station Ethernet communication-related settings are configured, and on the Partner Station Setting screen, the communication partner Ethernet-related settings are configured.

4.4.1. Ethernet Radio Master Station Setting Screen



No.	Name	Details	Setting range
(1)	IP Address	Register the IP address of the Wireless unit.	0.0.0.0 to 255.255.255.254
(2)	Subnet Mask	Set the subnet mask for the IP of the Wireless unit.	128.0.0.0 to 255.255.255.254
(3)	Port No.(HEX)	Set the port number of the Wireless unit for communication with the partner Ethernet device.	0000 to FFFF
(4)	Protocol Selection	Set the protocol format of MC Protocol for communication with the partner Ethernet device. Set it according to the device to be used. Q Series PLC: 3E Frame FX Series PLC: 1E Frame	3E Frame/ 1E Frame

4.4.2. Ethernet Partner Station Setting Screen



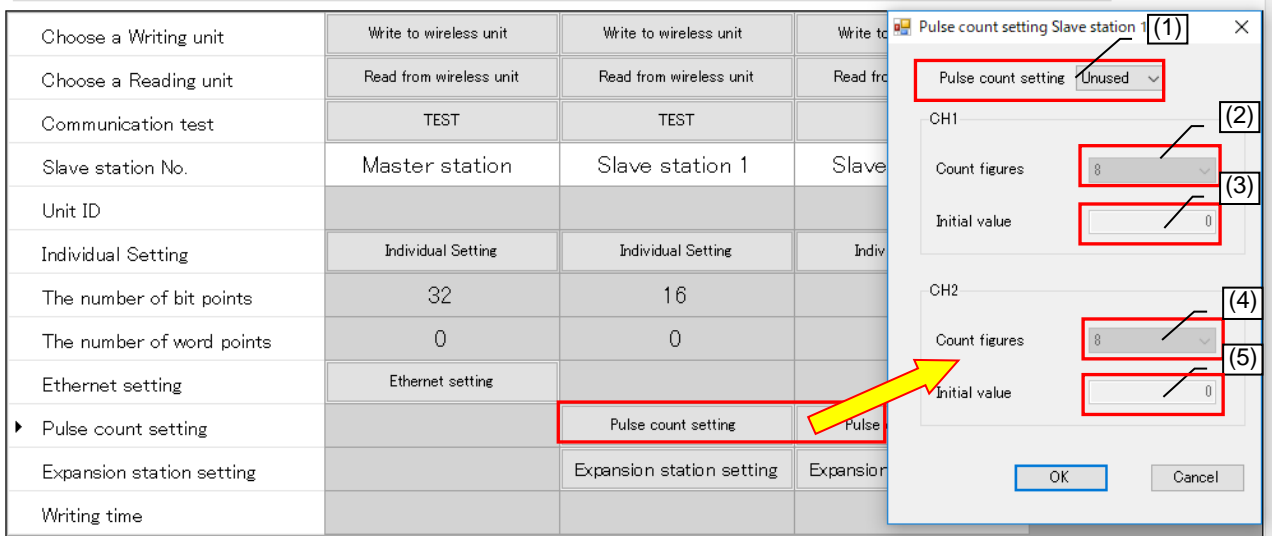
No.	Name	Details	Setting range
(1)	IP Address	Register the IP address of the partner Ethernet device.	0.0.0.0 to 255.255.255.254
(2)	Port No.(HEX)	Set the port number of the partner station for communication with the partner Ethernet device.	0000 to FFFF
(3)	Network No.	Set the number of the network system which is the last to be passed when the PLC is accessed.	00H to FEH
(4)	PC No.	Set the PC number of the access station on the system with the setting number of the network unit or others. (PC number: FF is valid only when the network number is 00H.)	00H to FFH
(5)	Request Destination I/O Station No.	Set them according to the PLC used. If the PLC CPU of the access station is as follows, refer to the manual of the CPU used. • Multi-CPU system PLC SOU • PLC CPU on multi-drop connection with Q Series C24 or others • Duplex system CPU For cases other than the above, set the default. (Fixed)	0000H to FFFFH
(6)	Request Destination Unit Station No.		00H to FFH
(7)	CPU Monitoring Timer	Set the time for the Ethernet unit to monitor the host station CPU. (Setting value × 250) [ms]	1 to 9999
(8)	Ethernet Timeout	Set the communication timeout time [ms] from transmission to reception with the Ethernet device. (Setting value × 1) [ms] *1	100 to 9999
(9)	Communication Device Setting	Settings for a device which writes the data to the Ethernet partner device via MC Protocol are configured. Set the device to the Device Type and set the device No, to the Start No. of the device to be written. The use range for the Wireless unit shall not overlap with the one for devices used by other systems. For details, refer to the next page.	—

*1 If communications are unavailable with the Ethernet communication partner even after Ethernet timeout time [ms] × 3 passes, "EG," the error code, will be generated.

No.	Name	Details	Setting range
(1)	Bit Input Device Type	Set the Device Type and the device Start No. to write the bit input data (an input signal from Wireless unit slave station).	[X/D] *1 (D can be set only when 1E Frame is selected.)
(2)	Bit Input Start No.		0 to 1FFF (0 to 8000 when D is set)
(3)	Bit Output Device Type	Set the Device Type and the device Start No. to read the bit output data (an output signal to Wireless unit slave station).	[Y/D] *1 (D can be set only when 1E Frame is selected.)
(4)	Bit Output Start No.		0 to 1FFF (0 to 8000 when D is set)
(5)	Word Input Device Type	Set the Device Type and the device Start No. to write the word input data (analog input data from Wireless unit slave station).	[D]
(6)	Word Input Start No.		0 to 8000
(7)	Word Output Device Type	Set the Device Type and the device Start No. to read the word output data (analog output data to Wireless unit slave station).	[D]
(8)	Word Output Start No.		0 to 8000

*1 Select D when FX3 Series PLC is used.
Select X and Y when Q Series PLC is used.

4.5. Pulse Count Setting Screen

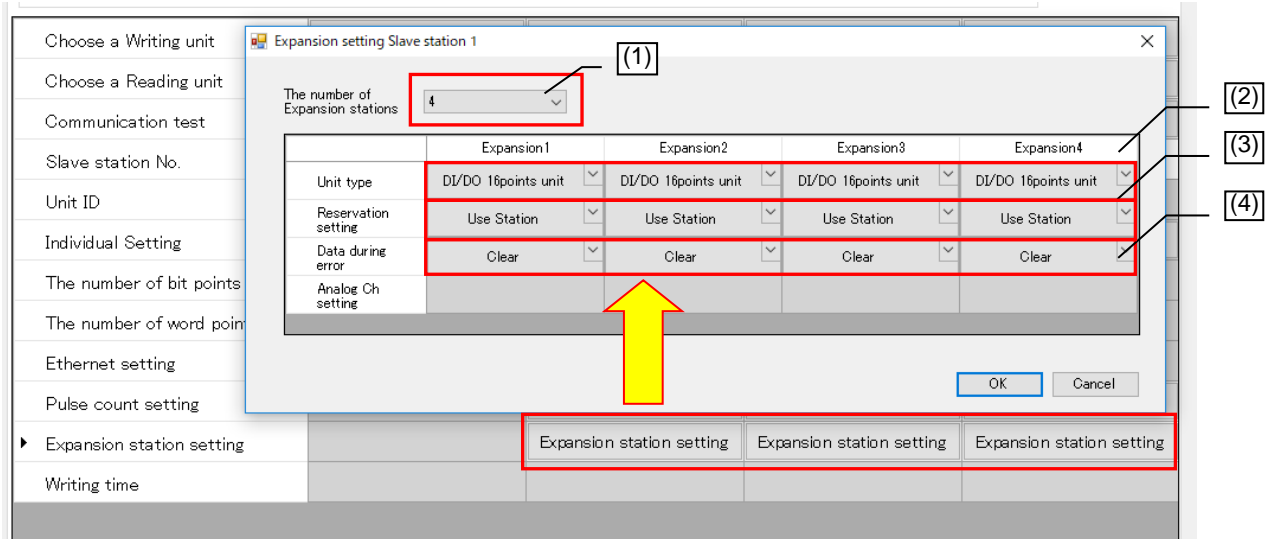


No.	Name	Details	Setting range
(1)	Pulse Count Setting	The number of channels which use the pulse count function is set. If "Unused" is selected, the pulse count function will not be used.	Unused/1Ch/2Ch
(2)	Pulse Count Ch1 No. of Digit Setting	Set the number of digits to count the pulse 1Ch.	1 to 8
(3)	Pulse Count Ch1 Default Setting	Set the starting value for the pulse 1Ch count.	0 to 99999999 (depends on the number of count digits)
(4)	Pulse Count Ch2 No. of Digits Setting	Set the number of digits to count the pulse 2Ch.	1 to 8
(5)	Pulse Count Ch2 Default Setting	Set the starting value for the pulse 2Ch count.	0 to 99999999 (depends on the number of count digits)

4.6. Expansion Unit Setting Screen

On the Expansion Unit Setting screen, settings related to the expansion unit connected to the slave station are configured.

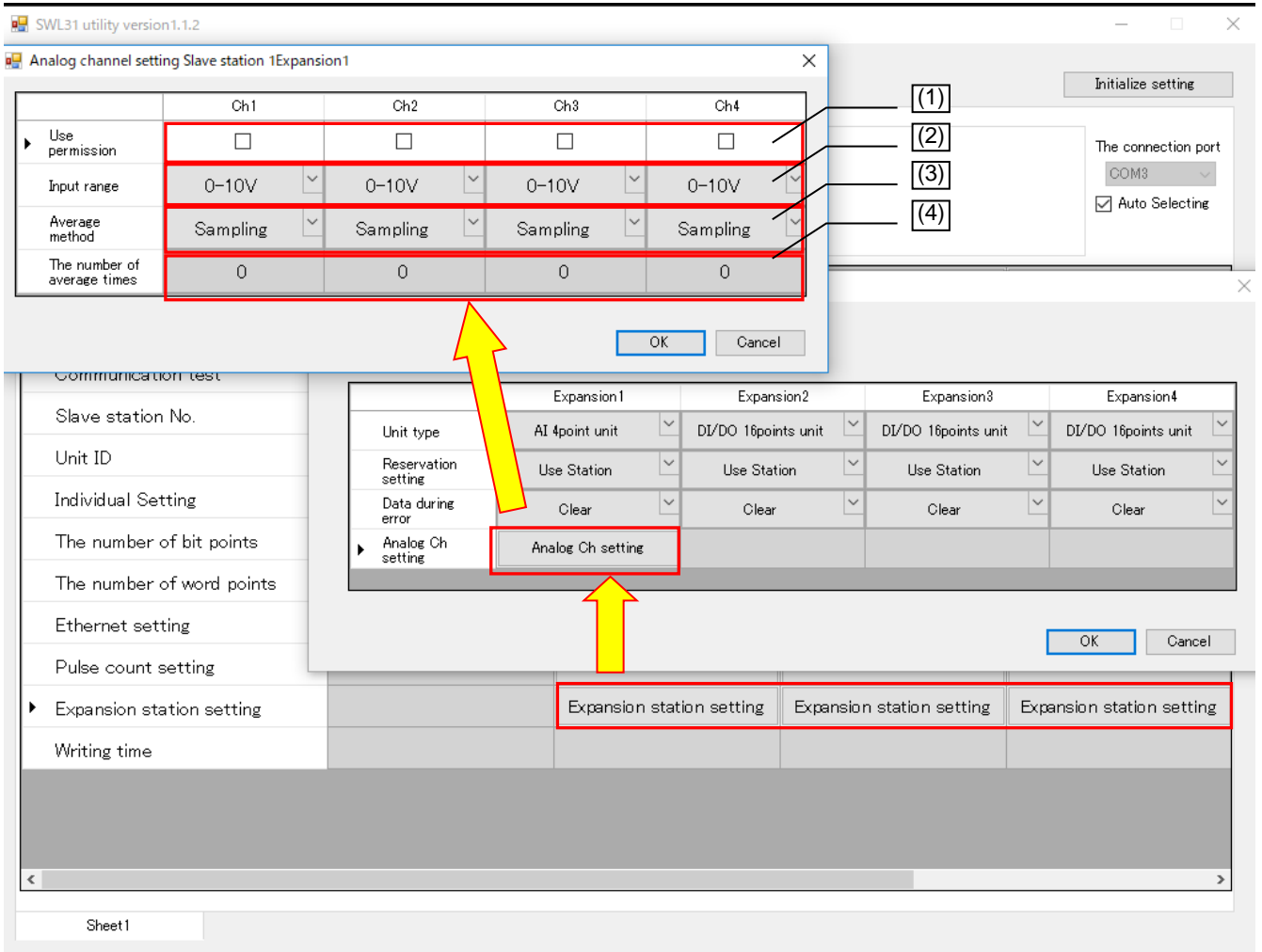
4.6.1. Expansion Setting Screen



No.	Name	Details	Setting range
(1)	No. of Expansion Stations	Set the number of expansion units (reserved stations included) to be connected to the slave station. The expansion settings of the number of units set as the No. of Expansion Stations will be displayed to be set.	0 to 8
(2)	Unit Type	Set the expansion unit type to be connected.	I/O 16-point Unit, Analog Input 4-point Unit
(3)	Reserve Setting	Set Use Station or Reserve Station for the expansion unit set.	Use Station, Reserve Station
(4)	Data on Error	Set the handling (Clear/Hold) of output data on error occurrence.	Clear/Hold Follow the Slave Station.

4.6.2. Analog Ch Setting Screen

On the Analog Ch Setting screen, the analog expansion unit analog channels settings are configured.



No.	Name	Details	Setting range
(1)	Analog Ch Conversion Permission	Set if the relevant analog Ch is used.	ON, OFF
(2)	Input Range	Set the range of the data to be used.	0-10V, 0-5V, 1-5V, 0-20mA, 4-20mA
(3)	Average Method	Set the method for average processing for data display.	Sampling, Times Average, Time Average, Moving Average
(4)	Average Count	Set the count/time for average. Since Sampling does not have average processing, the Average Count will be invalid.	Times Average, Moving Average 0 to 32 times, Time Average 0 to 32 x 10 ms

Changes in Product Specifications

The specifications given in the catalogs, specifications, technical documents and others are subject to change without prior notice.

Product Application

■ Use Conditions

In using Mitsubishi products, the usage conditions shall be that the application will not lead to a major accident even if any problem or fault should occur in our products and that backup and other measures are taken.

■ Application Exceptions

- (1) Our products have been designed and manufactured for applications in general industries and other industries. Applications in which the public could be affected significantly such as in nuclear power plants and other power plants, public transportation such as railroad and aviation. And applications in which a special quality assurance system is required such as for vehicle equipment, medical machinery, equipment for recreation and amusement, safety equipment, incineration systems, and facilities which comply with the regulations of government agencies and individual industries will be excluded from the applications.
- (2) Applications in which human life or assets could be greatly affected and for which a particularly high reliability is required in terms of safety and control systems will be excluded from the applications.
- (3) However, even with the applications above, if the user approves that it is to be limited and special quality is not required, it would be adaptable.

Ethernet is a trademark of Xerox Corporation in U.S.A.
MC Protocol is an abbreviation of MELSEC Communication Protocol.
MELSEC is a trademark of Mitsubishi Electric Corporation.
.NET Framework is a registered trademark or a trademark of Microsoft Corporation in the United States and other countries.
Windows 7 is a registered trademark or a trademark of Microsoft Corporation in the United States and other countries.

MITSUBISHI ELECTRIC SYSTEM & SERVICE CO., LTD.

OVERSEAS SUPPORT GROUP (JAPAN)

Mail : osb.webmaster@melsc.jp

This printed material was issued in May, 2020. Please note that the contents of this manual are subject to change without notice.

X903130102B

Prepared in May, 2020